



ELECTRONIC COPY

LG723563678
Report verification at igi.org

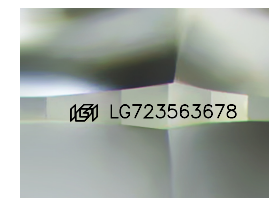


July 19, 2025
IGI Report Number **LG723563678**
Description **LABORATORY GROWN DIAMOND**
Shape and Cutting Style **SQUARE CUSHION MODIFIED
BRILLIANT**

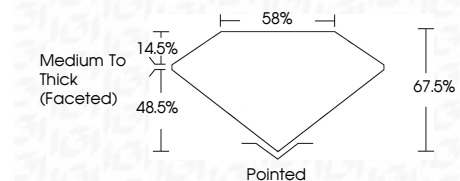
Measurements **8.34 X 8.19 X 5.53 MM**

GRADING RESULTS

Carat Weight **2.89 CARATS**
Color Grade **G**
Clarity Grade **VS 2**



Sample Image Used



ADDITIONAL GRADING INFORMATION

Polish **EXCELLENT**
Symmetry **EXCELLENT**
Fluorescence **NONE**
Inscription(s) **IGI LG723563678**
Comments: This Laboratory Grown Diamond was created by Chemical Vapor Deposition (CVD) growth process. Type IIa



LABORATORY GROWN DIAMOND REPORT

July 19, 2025
IGI Report Number **LG723563678**
Description **LABORATORY GROWN DIAMOND**
Shape and Cutting Style **SQUARE CUSHION MODIFIED
BRILLIANT**
Measurements **8.34 X 8.19 X 5.53 MM**

GRADING RESULTS

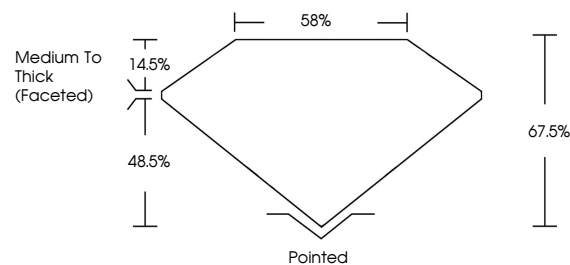
Carat Weight **2.89 CARATS**
Color Grade **G**
Clarity Grade **VS 2**

ADDITIONAL GRADING INFORMATION

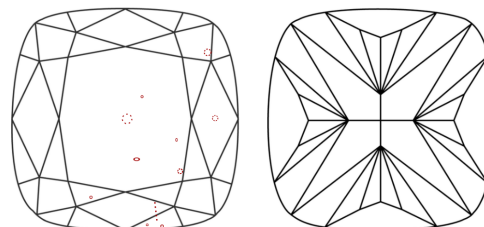
Polish **EXCELLENT**
Symmetry **EXCELLENT**
Fluorescence **NONE**
Inscription(s) **IGI LG723563678**

Comments: This Laboratory Grown Diamond was created by Chemical Vapor Deposition (CVD) growth process. Type IIa

PROPORTIONS



CLARITY CHARACTERISTICS



KEY TO SYMBOLS

Red symbols indicate internal characteristics.
Green symbols indicate external characteristics.

COLOR

D E F G H I J Faint Very Light Light

CLARITY

| IF | WS ¹⁻² | VS ¹⁻² | SI ¹⁻² | I ¹⁻³ |
|---------------------|-----------------------------|------------------------|-------------------|------------------|
| Internally Flawless | Very Very Slightly Included | Very Slightly Included | Slightly Included | Included |

July 19, 2025
IGI Report No LG723563678
SQUARE CUSHION MODIFIED BRILLIANT
8.34 X 8.19 X 5.53 MM
Carat Weight **2.89 CARATS**
Color Grade **G**
Clarity Grade **VS 2**
Depth **67.5%**
Table **48.5%**
Girdle **Medium To Thick (Faceted)**
Culet **Pointed**
Polish **EXCELLENT**
Symmetry **EXCELLENT**
Fluorescence **NONE**
Inscription(s) **IGI LG723563678**
Comments: This Laboratory Grown Diamond was created by Chemical Vapor Deposition (CVD) growth process. Type IIa