



INTERNATIONAL GEMOLOGICAL INSTITUTE

LABORATORY GROWN DIAMOND REPORT

July 22, 2025
IGI Report Number **LG724507272**
Description **LABORATORY GROWN DIAMOND**
Shape and Cutting Style **PRINCESS CUT**
Measurements **5.26 X 5.10 X 3.43 MM**

GRADING RESULTS

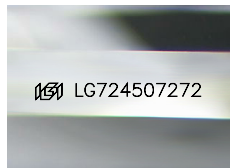
Carat Weight **0.83 CARAT**
Color Grade **F**
Clarity Grade **SI 1**

ADDITIONAL GRADING INFORMATION

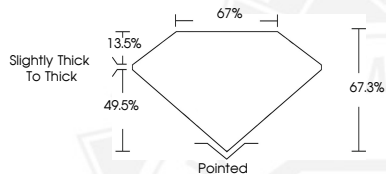
Polish **VERY GOOD**
Symmetry **VERY GOOD**
Fluorescence **NONE**
Inscription(s) **IGI LG724507272**

Comments: This Laboratory Grown Diamond was created by Chemical Vapor Deposition (CVD) growth process.
Type IIa

ELECTRONIC COPY



Sample Image Used



July 22, 2025
IGI Report Number **LG724507272**
PRINCESS CUT
LABORATORY GROWN DIAMOND
5.26 X 5.10 X 3.43 MM
Carat Weight **0.83 CARAT**
Color Grade **F**
Clarity Grade **SI 1**
Polish **VERY GOOD**
Symmetry **VERY GOOD**
Fluorescence **NONE**
Inscription(s) **IGI LG724507272**
Comments: This Laboratory Grown Diamond was created by Chemical Vapor Deposition (CVD) growth process. Type IIa



July 22, 2025
IGI Report Number **LG724507272**
PRINCESS CUT
LABORATORY GROWN DIAMOND
5.26 X 5.10 X 3.43 MM
Carat Weight **0.83 CARAT**
Color Grade **F**
Clarity Grade **SI 1**
Polish **VERY GOOD**
Symmetry **VERY GOOD**
Fluorescence **NONE**
Inscription(s) **IGI LG724507272**
Comments: This Laboratory Grown Diamond was created by Chemical Vapor Deposition (CVD) growth process. Type IIa



THIS DOCUMENT WAS PRODUCED WITH THE FOLLOWING SECURITY MEASURES: SPECIAL DOCUMENT PAPER, INK SCREENS, WATERMARK, BACKGROUND DESIGNS, HOLOGRAM AND OTHER SECURITY FEATURES NOT LISTED AND DO EXCEED DOCUMENT SECURITY INDUSTRY GUIDELINES.

For terms & conditions and to verify this report, please visit www.igi.org