



ELECTRONIC COPY

LG724518435
Report verification at igi.org



August 12, 2025
IGI Report Number **LG724518435**
Description **LABORATORY GROWN DIAMOND**
Shape and Cutting Style **CUT CORNERED
RECTANGULAR MODIFIED
BRILLIANT**
Measurements **9.14 X 6.30 X 4.28 MM**
GRADING RESULTS
Carat Weight **2.19 CARATS**
Color Grade **D**
Clarity Grade **VVS 2**

August 12, 2025
IGI Report Number **LG724518435**
Description **LABORATORY GROWN DIAMOND**
Shape and Cutting Style **CUT CORNERED RECTANGULAR
MODIFIED BRILLIANT**
Measurements **9.14 X 6.30 X 4.28 MM**

GRADING RESULTS

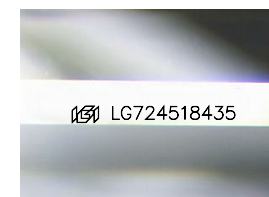
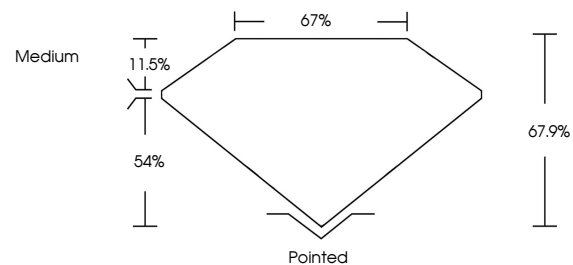
Carat Weight **2.19 CARATS**
Color Grade **D**
Clarity Grade **VVS 2**

ADDITIONAL GRADING INFORMATION

Polish **EXCELLENT**
Symmetry **EXCELLENT**
Fluorescence **NONE**
Inscription(s) **IGI LG724518435**

Comments: This Laboratory Grown Diamond was created by Chemical Vapor Deposition (CVD) growth process.
Type IIa

PROPORTIONS



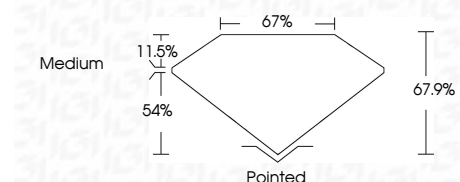
Sample Image Used

COLOR

D E F G H I J Faint Very Light Light

CLARITY

FL	IF	VVS ¹⁻²	VS ¹⁻²	SI ¹⁻²	I ¹⁻³
Flawless	Internally Flawless	Very Very Slightly Included	Very Slightly Included	Slightly Included	Included



ADDITIONAL GRADING INFORMATION

Polish **EXCELLENT**
Symmetry **EXCELLENT**
Fluorescence **NONE**
Inscription(s) **IGI LG724518435**
Comments: This Laboratory Grown Diamond was created by Chemical Vapor Deposition (CVD) growth process.
Type IIa



August 12, 2025
IGI Report No LG724518435
CUT CORNERED RECT. MODIFIED BRILLIANT
9.14 X 6.30 X 4.28 MM
2.19 CARATS
D
VVS 2
67%
67%
Medium
Pointed
EXCELLENT
EXCELLENT
NONE
IGI LG724518435
Comments: This Laboratory Grown Diamond was created by Chemical Vapor Deposition (CVD) growth process.
Type IIa