



**ELECTRONIC COPY**

LG724523827  
Report verification at igi.org



July 25, 2025

IGI Report Number **LG724523827**

Description **LABORATORY GROWN DIAMOND**

Shape and Cutting Style **CUT CORNERED  
RECTANGULAR MODIFIED  
BRILLIANT**

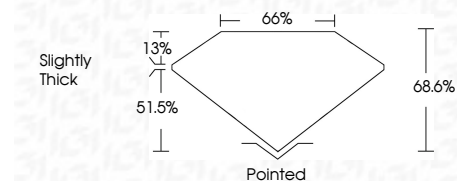
Measurements **8.26 X 5.95 X 4.08 MM**

**GRADING RESULTS**

Carat Weight **1.74 CARAT**

Color Grade **D**

Clarity Grade **VVS 1**



**ADDITIONAL GRADING INFORMATION**

Polish **EXCELLENT**

Symmetry **EXCELLENT**

Fluorescence **NONE**

Inscription(s) **(IGI) LG724523827**

Comments: This Laboratory Grown Diamond was created by Chemical Vapor Deposition (CVD) growth process. Type IIa



July 25, 2025	IGI Report No LG724523827	CUT CORNERED RECT. MODIFIED BRILLIANT	8.26 X 5.95 X 4.08 MM	1.74 CARAT	D	VVS 1	68.6%	51.5%	Slightly Thick	Pointed	EXCELLENT	EXCELLENT	NONE	(IGI) LG724523827
<p>Comments: This Laboratory Grown Diamond was created by Chemical Vapor Deposition (CVD) growth process. Type IIa</p>														

**LABORATORY GROWN DIAMOND REPORT**

July 25, 2025

IGI Report Number **LG724523827**

Description **LABORATORY GROWN DIAMOND**

Shape and Cutting Style **CUT CORNERED RECTANGULAR  
MODIFIED BRILLIANT**

Measurements **8.26 X 5.95 X 4.08 MM**

**GRADING RESULTS**

Carat Weight **1.74 CARAT**

Color Grade **D**

Clarity Grade **VVS 1**

**ADDITIONAL GRADING INFORMATION**

Polish **EXCELLENT**

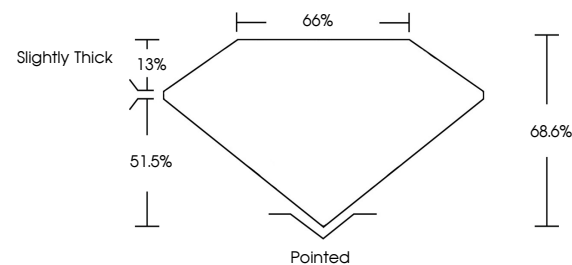
Symmetry **EXCELLENT**

Fluorescence **NONE**

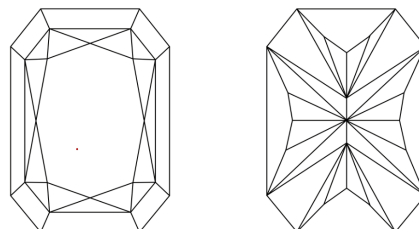
Inscription(s) **(IGI) LG724523827**

Comments: This Laboratory Grown Diamond was created by Chemical Vapor Deposition (CVD) growth process. Type IIa

**PROPORTIONS**

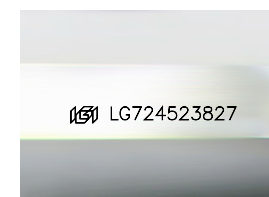


**CLARITY CHARACTERISTICS**



**KEY TO SYMBOLS**

Red symbols indicate internal characteristics.  
Green symbols indicate external characteristics.



Sample Image Used

**COLOR**

D E F G H I J Faint Very Light Light

**CLARITY**

IF WS<sup>1-2</sup> VS<sup>1-2</sup> SI<sup>1-2</sup> I<sup>1-3</sup>

Internally Flawless Very Very Slightly Included Very Slightly Included Slightly Included Included

