



ELECTRONIC COPY

LG724532234
Report verification at igi.org



July 26, 2025

IGI Report Number **LG724532234**

Description **LABORATORY GROWN DIAMOND**

Shape and Cutting Style **PEAR BRILLIANT**

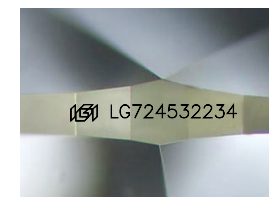
Measurements **12.54 X 8.11 X 5.03 MM**

GRADING RESULTS

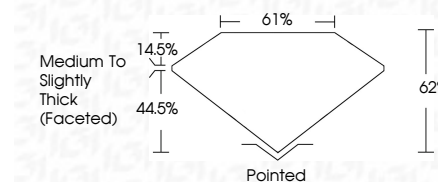
Carat Weight **3.02 CARATS**

Color Grade **E**

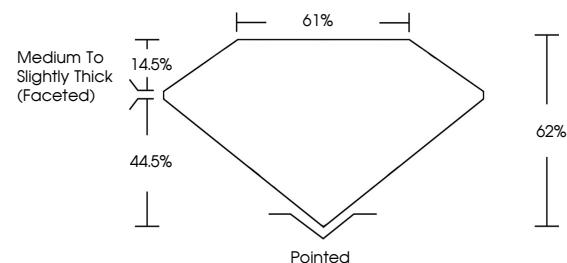
Clarity Grade **VS 2**



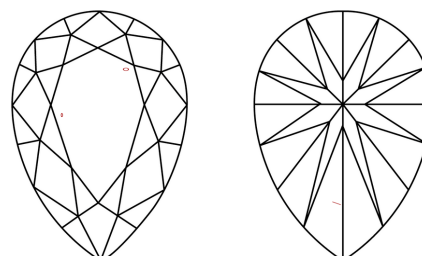
Sample Image Used



PROPORTIONS



CLARITY CHARACTERISTICS



KEY TO SYMBOLS

Red symbols indicate internal characteristics.
Green symbols indicate external characteristics.

COLOR

D E F G H I J Faint Very Light Light

CLARITY

IF	WS ¹⁻²	VS ¹⁻²	SI ¹⁻²	I ¹⁻³
Internally Flawless	Very Very Slightly Included	Very Slightly Included	Slightly Included	Included

ADDITIONAL GRADING INFORMATION

Polish **EXCELLENT**

Symmetry **EXCELLENT**

Fluorescence **NONE**

Inscription(s) **IGI LG724532234**

Comments: This Laboratory Grown Diamond was created by Chemical Vapor Deposition (CVD) growth process. Type IIa



IGI



July 26, 2025
IGI Report No LG724532234
PEAR BRILLIANT
12.54 X 8.11 X 5.03 MM
3.02 CARATS
E
VS 2
62%
61%
Medium to Slightly Thick (Faceted)
Pointed
EXCELLENT
EXCELLENT
NONE
IGI LG724532234
Comments: This Laboratory Grown Diamond was created by Chemical Vapor Deposition (CVD) growth process. Type IIa