



ELECTRONIC COPY

LG724537501 Report verification at igi.org



July 24, 2025 IGI Report Number LG724537501 Description LABORATORY GROWN DIAMOND Shape and Cutting Style MODIFIED DECAGONAL STEP CUT Measurements 11.79 X 7.25 X 3.74 MM GRADING RESULTS Carat Weight 2.03 CARATS Color Grade G Clarity Grade VS 1

LABORATORY GROWN DIAMOND REPORT

July 24, 2025 IGI Report Number LG724537501 Description LABORATORY GROWN DIAMOND Shape and Cutting Style MODIFIED DECAGONAL STEP CUT Measurements 11.79 X 7.25 X 3.74 MM

GRADING RESULTS

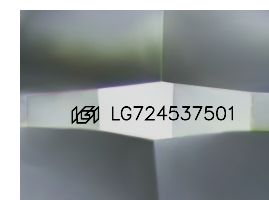
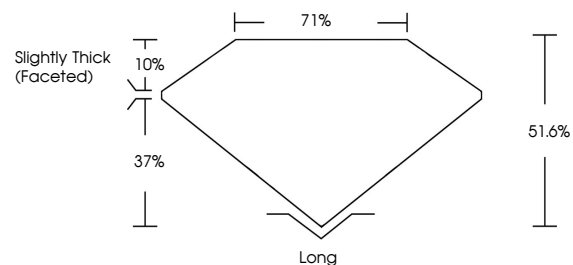
Carat Weight 2.03 CARATS Color Grade G Clarity Grade VS 1

ADDITIONAL GRADING INFORMATION

Polish VERY GOOD Symmetry VERY GOOD Fluorescence NONE Inscription(s) LG724537501

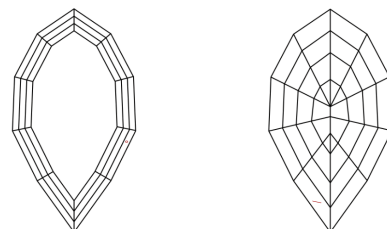
Comments: This Laboratory Grown Diamond was created by Chemical Vapor Deposition (CVD) growth process. Type IIa

PROPORTIONS



Sample Image Used

CLARITY CHARACTERISTICS



KEY TO SYMBOLS

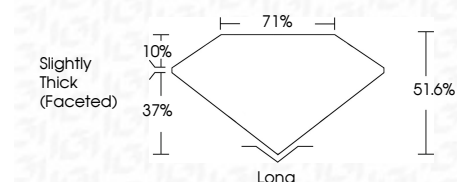
Red symbols indicate internal characteristics. Green symbols indicate external characteristics.

COLOR

D E F G H I J Faint Very Light Light

CLARITY

IF WS 1-2 VS 1-2 SI 1-2 I 1-3 Internally Flawless Very Very Slightly Included Very Slightly Included Slightly Included Included



ADDITIONAL GRADING INFORMATION

Polish VERY GOOD Symmetry VERY GOOD Fluorescence NONE Inscription(s) LG724537501 Comments: This Laboratory Grown Diamond was created by Chemical Vapor Deposition (CVD) growth process. Type IIa



July 24, 2025 IGI Report No LG724537501 MODIFIED DECAGONAL STEP CUT 11.79 X 7.25 X 3.74 MM 2.03 CARATS G VS 1 51.6% 71% Slightly Thick (Faceted) Long VERY GOOD VERY GOOD NONE NONE LG724537501 Comments: This Laboratory Grown Diamond was created by Chemical Vapor Deposition (CVD) growth process. Type IIa