



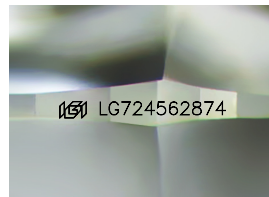
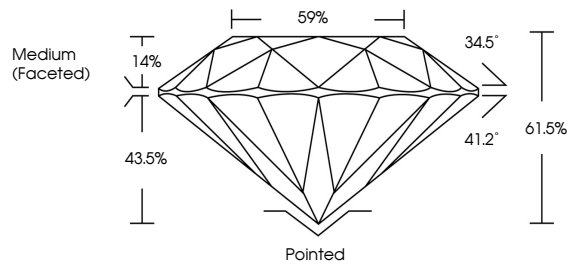
**INTERNATIONAL  
GEMOLOGICAL  
INSTITUTE**

**ELECTRONIC COPY**

## LABORATORY GROWN DIAMOND REPORT

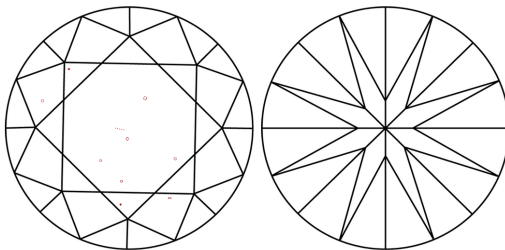
LG724562874  
Report verification at [igi.org](https://igi.org)

## PROPORTIONS



Sample Image Used

## CLARITY CHARACTERISTICS



## KEY TO SYMBOLS

Red symbols indicate internal characteristics.  
Green symbols indicate external characteristics.

## COLOR

D E F G H I J Faint Very Light Light

## CLARITY

IF      WS<sup>1-2</sup>      VS<sup>1-2</sup>      SI<sup>1-2</sup>      I<sup>1-3</sup>

Internally Flawless	Very Very Slightly Included	Very Slightly Included	Slightly Included	Included
------------------------	--------------------------------	---------------------------	----------------------	----------



© IGI 2020, International Gemological Institute

FD - 10 20

LABORATORY GROWN DIAMOND REPORT



July 30, 2025

IGI Report Number **LG724562874**

Description	LABORATORY GROWN DIAMOND
-------------	--------------------------

Shape and Cutting Style **ROUND BRILLIANT**

Measurements 13.79 - 13.90 X 8.51 MM

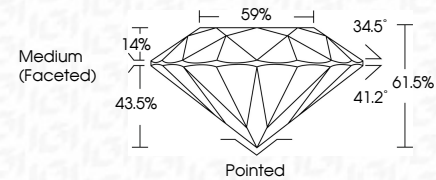
## GRADING RESULTS

Carat Weight **10.05 CARATS**

Color Grade	E
-------------	---

Clarity Grade VS 1

Cut Grade **IDEAL**



### ADDITIONAL GRADING INFORMATION

Polish **EXCELLENT**Symmetry **EXCELLENT**Fluorescence **NONE**Inscription(s)  LG72456287

Comments: This Laboratory Grown Diamond was created by Chemical Vapor Deposition (CVD) growth process.  
Type IIa



IGI

July 30, 2025	
IGI Report No. I5724562874	
ROUND BRILLIANT	
13.79 - 13.90 X 8.61 MM	10.06 CARATS
Carat Weight	
Color Grade	Vs 1
Clarity Grade	IDEAL
Cut Grade	61.5%
Depth	69%
Table	
Girdle	Medium (Faceted)
Culet	Pointed
Polish	EXCELLENT
Symmetry	EXCELLENT
Fluorescence	NONE
Inclusions(s)	(#) I5724562874
Comments:	
This Laboratory Growth Diamond was created by Chemical Vapor Deposition (CVD) growth process.	
Type Ila	