



**ELECTRONIC COPY**

LG724563805  
Report verification at igi.org



July 26, 2025

IGI Report Number **LG724563805**

Description **LABORATORY GROWN DIAMOND**

Shape and Cutting Style **CUT CORNERED  
RECTANGULAR MODIFIED  
BRILLIANT**

Measurements **13.58 X 9.33 X 6.08 MM**

**GRADING RESULTS**

Carat Weight **6.76 CARATS**

Color Grade **E**

Clarity Grade **SI 1**

**LABORATORY GROWN DIAMOND REPORT**

July 26, 2025

IGI Report Number **LG724563805**

Description **LABORATORY GROWN DIAMOND**

Shape and Cutting Style **CUT CORNERED RECTANGULAR  
MODIFIED BRILLIANT**

Measurements **13.58 X 9.33 X 6.08 MM**

**GRADING RESULTS**

Carat Weight **6.76 CARATS**

Color Grade **E**

Clarity Grade **SI 1**

**ADDITIONAL GRADING INFORMATION**

Polish **EXCELLENT**

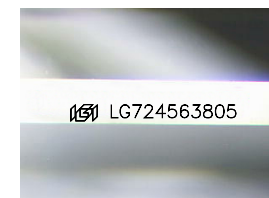
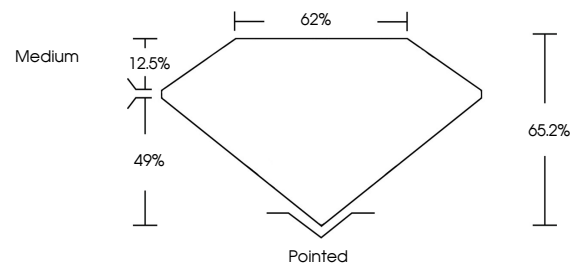
Symmetry **EXCELLENT**

Fluorescence **NONE**

Inscription(s) **IGI LG724563805**

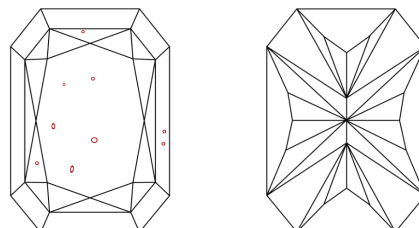
Comments: This Laboratory Grown Diamond was created by Chemical Vapor Deposition (CVD) growth process. Type IIa

**PROPORTIONS**



Sample Image Used

**CLARITY CHARACTERISTICS**



**KEY TO SYMBOLS**

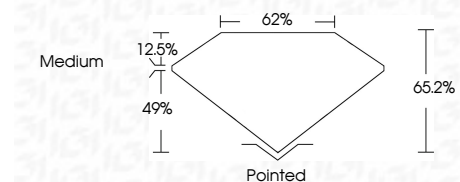
Red symbols indicate internal characteristics.  
Green symbols indicate external characteristics.

**COLOR**

D E F G H I J Faint Very Light Light

**CLARITY**

IF	VS <sup>1-2</sup>	VS <sup>1-2</sup>	SI <sup>1-2</sup>	I <sup>1-3</sup>
Internally Flawless	Very Very Slightly Included	Very Slightly Included	Slightly Included	Included



**ADDITIONAL GRADING INFORMATION**

Polish **EXCELLENT**

Symmetry **EXCELLENT**

Fluorescence **NONE**

Inscription(s) **IGI LG724563805**

Comments: This Laboratory Grown Diamond was created by Chemical Vapor Deposition (CVD) growth process. Type IIa



**IGI**



July 26, 2025  
IGI Report No LG724563805  
CUT CORNERED RECT. MODIFIED BRILLIANT  
13.58 X 9.33 X 6.08 MM  
6.76 CARATS  
E  
SI 1  
65.2%  
49%  
62%  
Medium  
Pointed  
EXCELLENT  
EXCELLENT  
NONE  
IGI LG724563805

Comments: This Laboratory Grown Diamond was created by Chemical Vapor Deposition (CVD) growth process. Type IIa