



July 30, 2025

IGI Report Number LG724565706
ROUND BRILLIANT
LABORATORY GROWN DIAMOND
3.84 - 3.87 X 2.43 MM

Carat Weight 0.22 CARAT
Color Grade FANCY DEEP ORANGE

Clarity Grade VS 1
Cut Grade EXCELLENT
Polish VERY GOOD
Symmetry VERY GOOD
Fluorescence NONE
Inscription(s) IGI LG724565706

Comments: This Laboratory Grown Diamond was created by High Pressure High Temperature (HPHT) growth process. Indications of post-growth treatment.

LABORATORY GROWN DIAMOND REPORT

July 30, 2025
IGI Report Number **LG724565706**
Description **LABORATORY GROWN DIAMOND**
Shape and Cutting Style **ROUND BRILLIANT**
Measurements **3.84 - 3.87 X 2.43 MM**

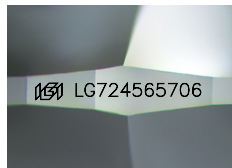
GRADING RESULTS

Carat Weight 0.22 CARAT
Color Grade FANCY DEEP ORANGE
Clarity Grade VS 1
Cut Grade EXCELLENT

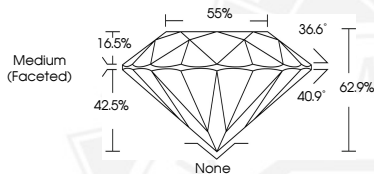
ADDITIONAL GRADING INFORMATION

Polish VERY GOOD
Symmetry VERY GOOD
Fluorescence NONE
Inscription(s) IGI LG724565706

Comments: This Laboratory Grown Diamond was created by High Pressure High Temperature (HPHT) growth process. Indications of post-growth treatment.



Sample Image Used



July 30, 2025

IGI Report Number LG724565706
ROUND BRILLIANT
LABORATORY GROWN DIAMOND
3.84 - 3.87 X 2.43 MM

Carat Weight 0.22 CARAT
Color Grade FANCY DEEP ORANGE

Clarity Grade VS 1
Cut Grade EXCELLENT
Polish VERY GOOD
Symmetry VERY GOOD
Fluorescence NONE
Inscription(s) IGI LG724565706

Comments: This Laboratory Grown Diamond was created by High Pressure High Temperature (HPHT) growth process. Indications of post-growth treatment.



THIS DOCUMENT WAS PRODUCED WITH THE FOLLOWING SECURITY MEASURES: SPECIAL DOCUMENT PAPER, INK SCREENS, WATERMARK, BACKGROUND DESIGNS, HOLOGRAM AND OTHER SECURITY FEATURES NOT LISTED AND DO EXCEED DOCUMENT SECURITY INDUSTRY GUIDELINES.