



ELECTRONIC COPY

LG724578992
Report verification at igi.org



August 7, 2025
IGI Report Number LG724578992
Description LABORATORY GROWN DIAMOND
Shape and Cutting Style RECTANGULAR CUSHION MIXED CUT
Measurements 15.38 X 9.09 X 5.98 MM
GRADING RESULTS
Carat Weight 7.51 CARATS
Color Grade E
Clarity Grade VS 1

August 7, 2025
IGI Report Number LG724578992
Description LABORATORY GROWN DIAMOND
Shape and Cutting Style RECTANGULAR CUSHION MIXED CUT
Measurements 15.38 X 9.09 X 5.98 MM

GRADING RESULTS

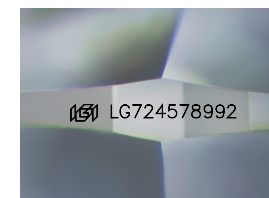
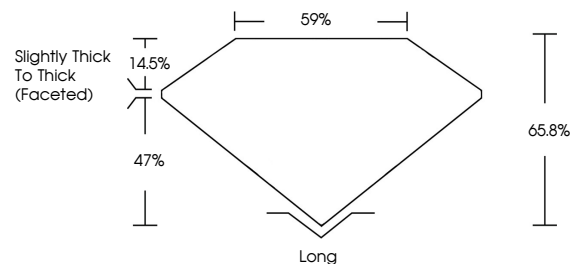
Carat Weight 7.51 CARATS
Color Grade E
Clarity Grade VS 1

ADDITIONAL GRADING INFORMATION

Polish EXCELLENT
Symmetry EXCELLENT
Fluorescence NONE
Inscription(s) (IGI) LG724578992

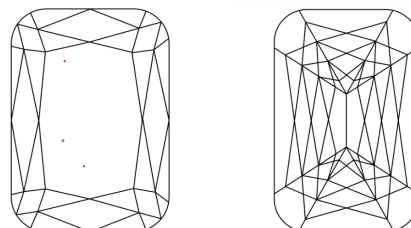
Comments: This Laboratory Grown Diamond was created by Chemical Vapor Deposition (CVD) growth process. Type IIa

PROPORTIONS



Sample Image Used

CLARITY CHARACTERISTICS



KEY TO SYMBOLS

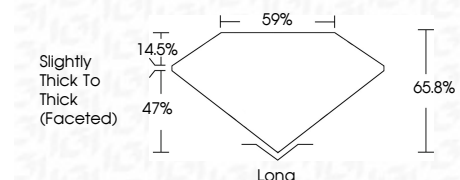
Red symbols indicate internal characteristics.
Green symbols indicate external characteristics.

COLOR

D E F G H I J Faint Very Light Light

CLARITY

IF WS 1-2 VS 1-2 SI 1-2 I 1-3
Internally Flawless Very Very Slightly Included Very Slightly Included Slightly Included Included



ADDITIONAL GRADING INFORMATION

Polish EXCELLENT
Symmetry EXCELLENT
Fluorescence NONE
Inscription(s) (IGI) LG724578992
Comments: This Laboratory Grown Diamond was created by Chemical Vapor Deposition (CVD) growth process. Type IIa



August 7, 2025
IGI Report No LG724578992
RECTANGULAR CUSHION MIXED CUT
15.38 X 9.09 X 5.98 MM
7.51 CARATS
E
7.51 CARATS
E
65.0%
59%
Slightly Thick To Thick (Faceted)
Long
EXCELLENT
EXCELLENT
NONE
(IGI) LG724578992
Comments: This Laboratory Grown Diamond was created by Chemical Vapor Deposition (CVD) growth process. Type IIa