



**INTERNATIONAL
GEMOLOGICAL
INSTITUTE**

ELECTRONIC COPY



August 5, 2025

IGI Report Number **LG724595673**

ROUND BRILLIANT

LABORATORY GROWN DIAMOND

4.36 - 4.38 X 2.50 MM

Carat Weight **0.29 CARAT**
Color Grade **FANCY DEEP ORANGE**

Clarity Grade **VS 1**

Cut Grade **VERY GOOD**

Polish **EXCELLENT**

Symmetry **VERY GOOD**

Fluorescence **NONE**

Inscription(s) **IGI LG724595673**

Comments: This Laboratory Grown Diamond was created by High Pressure High Temperature (HPHT) growth process. Indications of post-growth treatment.

LABORATORY GROWN DIAMOND REPORT

August 5, 2025

IGI Report Number

LG724595673

Description

LABORATORY GROWN DIAMOND

Shape and Cutting Style

ROUND BRILLIANT

Measurements

4.36 - 4.38 X 2.50 MM

GRADING RESULTS

Carat Weight

0.29 CARAT

Color Grade

FANCY DEEP ORANGE

Clarity Grade

VS 1

Cut Grade

VERY GOOD

ADDITIONAL GRADING INFORMATION

Polish

EXCELLENT

Symmetry

VERY GOOD

Fluorescence

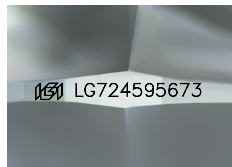
NONE

Inscription(s)

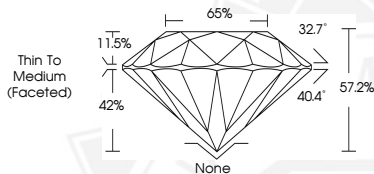
IGI LG724595673

Comments: This Laboratory Grown Diamond was created by High Pressure High Temperature (HPHT) growth process.

Indications of post-growth treatment.



Sample Image Used



August 5, 2025

IGI Report Number **LG724595673**

ROUND BRILLIANT

LABORATORY GROWN DIAMOND

4.36 - 4.38 X 2.50 MM

Carat Weight **0.29 CARAT**
Color Grade **FANCY DEEP ORANGE**

Clarity Grade **VS 1**

Cut Grade **VERY GOOD**

Polish **EXCELLENT**

Symmetry **VERY GOOD**

Fluorescence **NONE**

Inscription(s) **IGI LG724595673**

Comments: This Laboratory Grown Diamond was created by High Pressure High Temperature (HPHT) growth process. Indications of post-growth treatment.



THIS DOCUMENT WAS PRODUCED WITH THE FOLLOWING SECURITY MEASURES: SPECIAL DOCUMENT PAPER, INK SCREENS, WATERMARK, BACKGROUND DESIGNS, HOLOGRAM AND OTHER SECURITY FEATURES NOT LISTED AND DO EXCEED DOCUMENT SECURITY INDUSTRY GUIDELINES.

For terms & conditions and to verify this report, please visit www.igi.org