



ELECTRONIC COPY

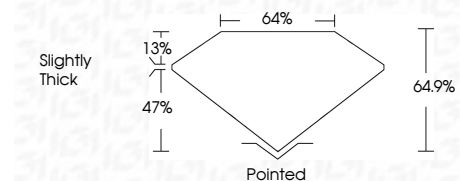
LG724597410
Report verification at igi.org



September 1, 2025
IGI Report Number **LG724597410**
Description **LABORATORY GROWN DIAMOND**
Shape and Cutting Style **SQUARE EMERALD CUT**
Measurements **8.16 X 8.15 X 5.29 MM**

GRADING RESULTS

Carat Weight **3.21 CARATS**
Color Grade **H**
Clarity Grade **VS 2**



ADDITIONAL GRADING INFORMATION

Polish **EXCELLENT**
Symmetry **EXCELLENT**
Fluorescence **NONE**
Inscription(s) **IGI LG724597410**
Comments: This Laboratory Grown Diamond was created by Chemical Vapor Deposition (CVD) growth process. Type IIa



September 1, 2025
IGI Report No LG724597410
SQUARE EMERALD CUT
8.16 X 8.15 X 5.29 MM
3.21 CARATS
H
VS 2
64.9%
47%
13%
Slightly Thick
Pointed
EXCELLENT
EXCELLENT
NONE
IGI LG724597410
Comments: This Laboratory Grown Diamond was created by Chemical Vapor Deposition (CVD) growth process. Type IIa

LABORATORY GROWN DIAMOND REPORT

September 1, 2025
IGI Report Number **LG724597410**
Description **LABORATORY GROWN DIAMOND**
Shape and Cutting Style **SQUARE EMERALD CUT**
Measurements **8.16 X 8.15 X 5.29 MM**

GRADING RESULTS

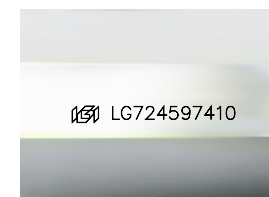
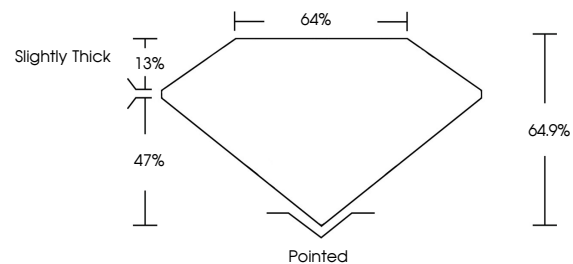
Carat Weight **3.21 CARATS**
Color Grade **H**
Clarity Grade **VS 2**

ADDITIONAL GRADING INFORMATION

Polish **EXCELLENT**
Symmetry **EXCELLENT**
Fluorescence **NONE**
Inscription(s) **IGI LG724597410**

Comments: This Laboratory Grown Diamond was created by Chemical Vapor Deposition (CVD) growth process. Type IIa

PROPORTIONS



Sample Image Used

COLOR

D E F G H I J Faint Very Light Light

CLARITY

IF	WS ¹⁻²	VS ¹⁻²	SI ¹⁻²	I ¹⁻³
Internally Flawless	Very Very Slightly Included	Very Slightly Included	Slightly Included	Included

