



ELECTRONIC COPY

LG725512303
Report verification at igi.org



September 30, 2025

IGI Report Number **LG725512303**

Description **LABORATORY GROWN DIAMOND**

Shape and Cutting Style **EMERALD CUT**

Measurements **11.28 X 8.18 X 5.47 MM**

GRADING RESULTS

Carat Weight **5.21 CARATS**

Color Grade **I**

Clarity Grade **VVS 2**

September 30, 2025
IGI Report Number **LG725512303**
Description **LABORATORY GROWN DIAMOND**
Shape and Cutting Style **EMERALD CUT**
Measurements **11.28 X 8.18 X 5.47 MM**

GRADING RESULTS

Carat Weight **5.21 CARATS**

Color Grade **I**

Clarity Grade **VVS 2**

ADDITIONAL GRADING INFORMATION

Polish **EXCELLENT**

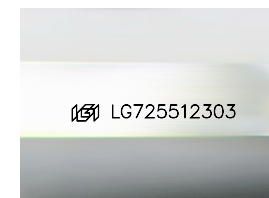
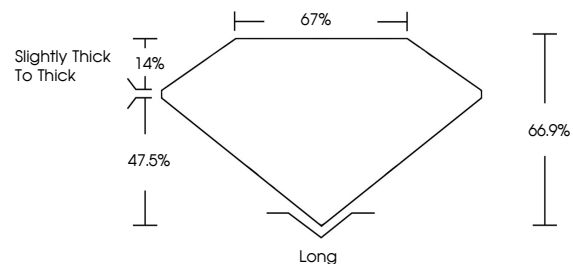
Symmetry **VERY GOOD**

Fluorescence **NONE**

Inscription(s) **IGI LG725512303**

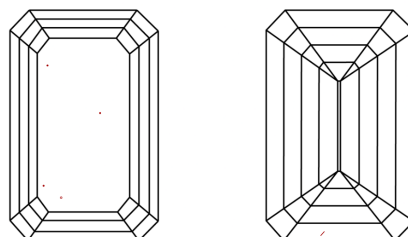
Comments: This Laboratory Grown Diamond was created by Chemical Vapor Deposition (CVD) growth process. Type IIa

PROPORTIONS



Sample Image Used

CLARITY CHARACTERISTICS



KEY TO SYMBOLS

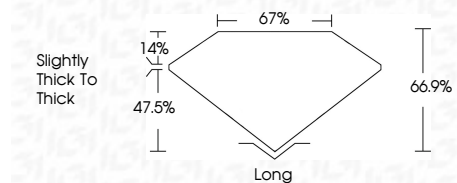
Red symbols indicate internal characteristics.
Green symbols indicate external characteristics.

COLOR

D E F G H I J Faint Very Light Light

CLARITY

FL	IF	VVS ¹⁻²	VS ¹⁻²	SI ¹⁻²	I ¹⁻³
Flawless	Internally Flawless	Very Very Slightly Included	Very Slightly Included	Slightly Included	Included



ADDITIONAL GRADING INFORMATION

Polish **EXCELLENT**

Symmetry **VERY GOOD**

Fluorescence **NONE**

Inscription(s) **IGI LG725512303**

Comments: This Laboratory Grown Diamond was created by Chemical Vapor Deposition (CVD) growth process. Type IIa



IGI



September 30, 2025
IGI Report No LG725512303
EMERALD CUT
11.28 X 8.18 X 5.47 MM
5.21 CARATS
I
VVS 2
66.9%
67%
Slightly Thick To Thick
Long
EXCELLENT
VERY GOOD
NONE
IGI LG725512303
Comments: This Laboratory Grown Diamond was created by Chemical Vapor Deposition (CVD) growth process. Type IIa