



ELECTRONIC COPY

LG725512307
Report verification at igi.org



September 29, 2025
IGI Report Number **LG725512307**
Description **LABORATORY GROWN DIAMOND**
Shape and Cutting Style **SQUARE CUSHION MODIFIED
BRILLIANT**

Measurements **8.53 X 8.47 X 5.74 MM**

GRADING RESULTS

Carat Weight **3.51 CARATS**
Color Grade **G**
Clarity Grade **VS 1**

September 29, 2025
IGI Report Number **LG725512307**
Description **LABORATORY GROWN DIAMOND**
Shape and Cutting Style **SQUARE CUSHION MODIFIED
BRILLIANT**
Measurements **8.53 X 8.47 X 5.74 MM**

GRADING RESULTS

Carat Weight **3.51 CARATS**
Color Grade **G**
Clarity Grade **VS 1**

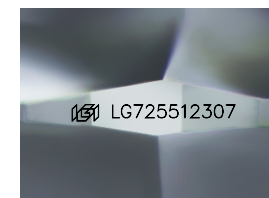
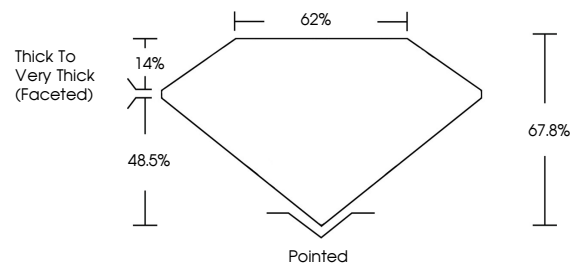
ADDITIONAL GRADING INFORMATION

Polish **EXCELLENT**
Symmetry **VERY GOOD**
Fluorescence **NONE**

Inscription(s) **IGI LG725512307**

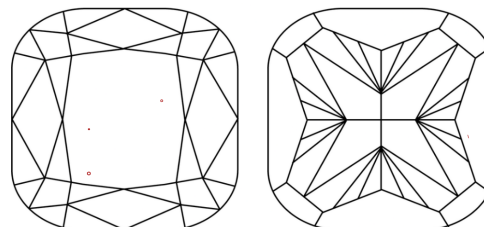
Comments: This Laboratory Grown Diamond was created by Chemical Vapor Deposition (CVD) growth process.
Type IIa

PROPORTIONS



Sample Image Used

CLARITY CHARACTERISTICS



KEY TO SYMBOLS

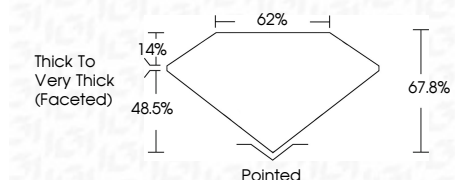
Red symbols indicate internal characteristics.
Green symbols indicate external characteristics.

COLOR

D E F G H I J Faint Very Light Light

CLARITY

FL	IF	VS ¹⁻²	VS ¹⁻²	SI ¹⁻²	I ¹⁻³
Flawless	Internally Flawless	Very Very Slightly Included	Very Slightly Included	Slightly Included	Included



ADDITIONAL GRADING INFORMATION

Polish **EXCELLENT**
Symmetry **VERY GOOD**
Fluorescence **NONE**
Inscription(s) **IGI LG725512307**
Comments: This Laboratory Grown Diamond was created by Chemical Vapor Deposition (CVD) growth process.
Type IIa



IGI



September 29, 2025
IGI Report No LG725512307
SQUARE CUSHION MODIFIED BRILLIANT
8.53 X 8.47 X 5.74 MM
3.51 CARATS
G
VS 1
67.8%
48.5%
62%
Thick to Very Thick (Faceted)
Pointed
EXCELLENT
VERY GOOD
NONE
IGI LG725512307
Comments: This Laboratory Grown Diamond was created by Chemical Vapor Deposition (CVD) growth process.
Type IIa