



October 12, 2025
IGI Report Number LG725512365
PRINCESS CUT
LABORATORY GROWN DIAMOND
5.26 X 4.98 X 3.78 MM
 Carat Weight **0.91 CARAT**
 Color Grade **F**
 Clarity Grade **SI 1**
 Polish **EXCELLENT**
 Symmetry **EXCELLENT**
 Fluorescence **NONE**
 Inscription(s) **IGI LG725512365**

LABORATORY GROWN DIAMOND REPORT

October 12, 2025
 IGI Report Number **LG725512365**
 Description **LABORATORY GROWN DIAMOND**
 Shape and Cutting Style **PRINCESS CUT**
 Measurements **5.26 X 4.98 X 3.78 MM**

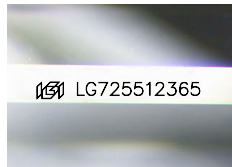
GRADING RESULTS

Carat Weight **0.91 CARAT**
 Color Grade **F**
 Clarity Grade **SI 1**

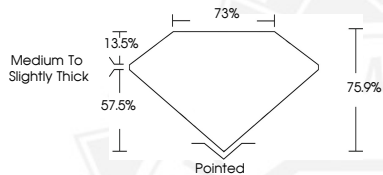
ADDITIONAL GRADING INFORMATION

Polish **EXCELLENT**
 Symmetry **EXCELLENT**
 Fluorescence **NONE**
 Inscription(s) **IGI LG725512365**

Comments: This Laboratory Grown Diamond was created by Chemical Vapor Deposition (CVD) growth process. Type IIa



Sample Image Used



October 12, 2025
IGI Report Number LG725512365
PRINCESS CUT
LABORATORY GROWN DIAMOND
5.26 X 4.98 X 3.78 MM
 Carat Weight **0.91 CARAT**
 Color Grade **F**
 Clarity Grade **SI 1**
 Polish **EXCELLENT**
 Symmetry **EXCELLENT**
 Fluorescence **NONE**
 Inscription(s) **IGI LG725512365**

Comments: This Laboratory Grown Diamond was created by Chemical Vapor Deposition (CVD) growth process. Type IIa



THIS DOCUMENT WAS PRODUCED WITH THE FOLLOWING SECURITY MEASURES: SPECIAL DOCUMENT PAPER, INK SCREENS, WATERMARK, BACKGROUND DESIGNS, HOLOGRAM AND OTHER SECURITY FEATURES NOT LISTED AND DO EXCEED DOCUMENT SECURITY INDUSTRY GUIDELINES.