



ELECTRONIC COPY

LG726502688 Report verification at igi.org



July 30, 2025 IGI Report Number LG726502688 Description LABORATORY GROWN DIAMOND Shape and Cutting Style ROUND BRILLIANT Measurements 12.13 - 12.24 X 7.26 MM GRADING RESULTS Carat Weight 7.00 CARATS Color Grade F Clarity Grade VS 1 Cut Grade VERY GOOD

July 30, 2025 IGI Report Number LG726502688 Description LABORATORY GROWN DIAMOND Shape and Cutting Style ROUND BRILLIANT Measurements 12.13 - 12.24 X 7.26 MM

GRADING RESULTS

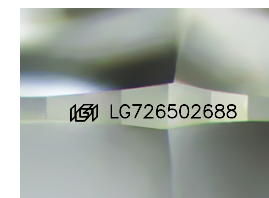
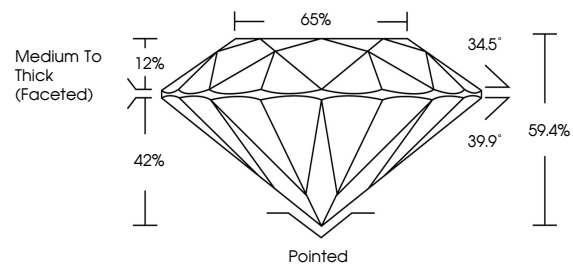
Carat Weight 7.00 CARATS Color Grade F Clarity Grade VS 1 Cut Grade VERY GOOD

ADDITIONAL GRADING INFORMATION

Polish EXCELLENT Symmetry EXCELLENT Fluorescence NONE Inscription(s) IGI LG726502688

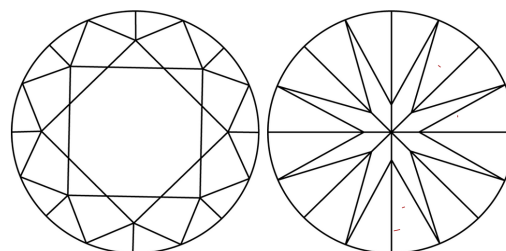
Comments: This Laboratory Grown Diamond was created by Chemical Vapor Deposition (CVD) growth process. Type IIa

PROPORTIONS



Sample Image Used

CLARITY CHARACTERISTICS



KEY TO SYMBOLS

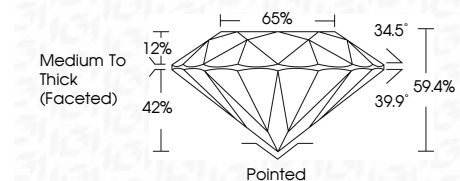
Red symbols indicate internal characteristics. Green symbols indicate external characteristics.

COLOR

D E F G H I J Faint Very Light Light

CLARITY

IF WS 1-2 VS 1-2 SI 1-2 I 1-3 Internally Flawless Very Very Slightly Included Very Slightly Included Slightly Included Included



ADDITIONAL GRADING INFORMATION

Polish EXCELLENT Symmetry EXCELLENT Fluorescence NONE Inscription(s) IGI LG726502688 Comments: This Laboratory Grown Diamond was created by Chemical Vapor Deposition (CVD) growth process. Type IIa



IGI



July 30, 2025 IGI Report No LG726502688 ROUND BRILLIANT 12.13 - 12.24 X 7.26 MM 7.00 CARATS F Color Grade VS 1 Clarity Grade VERY GOOD Depth 59.4% Table 65% Girdle Medium To Thick (Faceted) Culet Pointed Polish EXCELLENT Symmetry EXCELLENT Fluorescence NONE Inscription(s) IGI LG726502688 Comments: This Laboratory Grown Diamond was created by Chemical Vapor Deposition (CVD) growth process. Type IIa