



ELECTRONIC COPY

LG726510509
Report verification at igi.org



July 30, 2025

IGI Report Number **LG726510509**

Description **LABORATORY GROWN DIAMOND**

Shape and Cutting Style **CUT CORNERED
RECTANGULAR MODIFIED
BRILLIANT**

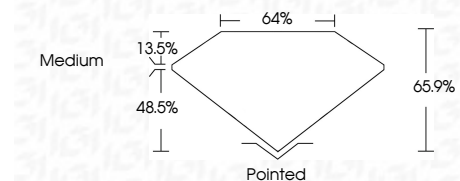
Measurements **10.55 X 7.27 X 4.79 MM**

GRADING RESULTS

Carat Weight **3.15 CARATS**

Color Grade **E**

Clarity Grade **VVS 2**



ADDITIONAL GRADING INFORMATION

Polish **EXCELLENT**

Symmetry **EXCELLENT**

Fluorescence **NONE**

Inscription(s) **IGI LG726510509**

Comments: This Laboratory Grown Diamond was created by Chemical Vapor Deposition (CVD) growth process. Type IIa



July 30, 2025	IGI Report No LG726510509	CUT CORNERED RECT. MODIFIED BRILLIANT	3.15 CARATS	E	VVS 2	65.9%	48.5%	Medium	Pointed	EXCELLENT	EXCELLENT	NONE	IGI LG726510509
IGI Report No LG726510509	CUT CORNERED RECT. MODIFIED BRILLIANT	10.55 X 7.27 X 4.79 MM	3.15 CARATS	E	VVS 2	65.9%	48.5%	Medium	Pointed	EXCELLENT	EXCELLENT	NONE	IGI LG726510509

Comments: This Laboratory Grown Diamond was created by Chemical Vapor Deposition (CVD) growth process. Type IIa

LABORATORY GROWN DIAMOND REPORT

July 30, 2025

IGI Report Number **LG726510509**

Description **LABORATORY GROWN DIAMOND**

Shape and Cutting Style **CUT CORNERED RECTANGULAR
MODIFIED BRILLIANT**

Measurements **10.55 X 7.27 X 4.79 MM**

GRADING RESULTS

Carat Weight **3.15 CARATS**

Color Grade **E**

Clarity Grade **VVS 2**

ADDITIONAL GRADING INFORMATION

Polish **EXCELLENT**

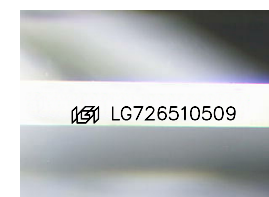
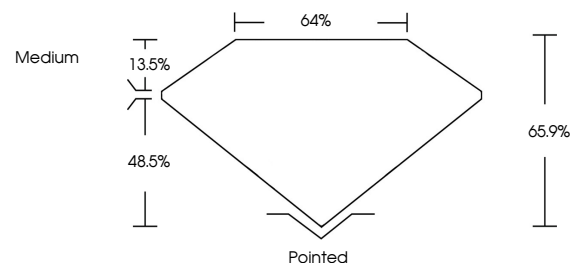
Symmetry **EXCELLENT**

Fluorescence **NONE**

Inscription(s) **IGI LG726510509**

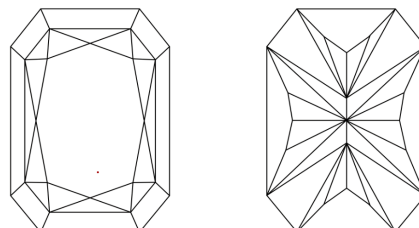
Comments: This Laboratory Grown Diamond was created by Chemical Vapor Deposition (CVD) growth process. Type IIa

PROPORTIONS



Sample Image Used

CLARITY CHARACTERISTICS



KEY TO SYMBOLS

Red symbols indicate internal characteristics.
Green symbols indicate external characteristics.

COLOR

D E F G H I J Faint Very Light Light

CLARITY

IF VS¹⁻² VS¹⁻² SI¹⁻² I¹⁻³

Internally Flawless Very Very Slightly Included Very Slightly Included Slightly Included Included

