



July 30, 2025

**IGI Report Number** LG726512101  
**ROUND BRILLIANT**  
**LABORATORY GROWN DIAMOND**  
**4.84 - 4.87 X 3.07 MM**

**0.45 CARAT**  
**D**  
**VVS 2**  
**EXCELLENT**  
**EXCELLENT**  
**EXCELLENT**  
**NONE**  
**Inscription(s)** IGI LG726512101

Comments: This Laboratory Grown Diamond was created by Chemical Vapor Deposition (CVD) growth process. Type IIa

**LABORATORY GROWN DIAMOND REPORT**

July 30, 2025  
IGI Report Number **LG726512101**  
Description **LABORATORY GROWN DIAMOND**  
Shape and Cutting Style **ROUND BRILLIANT**  
Measurements **4.84 - 4.87 X 3.07 MM**

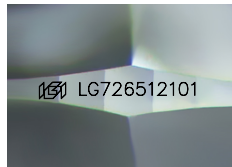
**GRADING RESULTS**

Carat Weight **0.45 CARAT**  
Color Grade **D**  
Clarity Grade **VVS 2**  
Cut Grade **EXCELLENT**

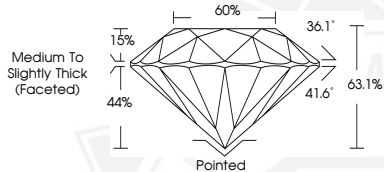
**ADDITIONAL GRADING INFORMATION**

Polish **EXCELLENT**  
Symmetry **EXCELLENT**  
Fluorescence **NONE**  
Inscription(s) **IGI LG726512101**

Comments: This Laboratory Grown Diamond was created by Chemical Vapor Deposition (CVD) growth process. Type IIa



Sample Image Used



July 30, 2025

**IGI Report Number** LG726512101  
**ROUND BRILLIANT**  
**LABORATORY GROWN DIAMOND**  
**4.84 - 4.87 X 3.07 MM**

**0.45 CARAT**  
**D**  
**VVS 2**  
**EXCELLENT**  
**EXCELLENT**  
**EXCELLENT**  
**NONE**  
**Inscription(s)** IGI LG726512101

Comments: This Laboratory Grown Diamond was created by Chemical Vapor Deposition (CVD) growth process. Type IIa



THIS DOCUMENT WAS PRODUCED WITH THE FOLLOWING SECURITY MEASURES: SPECIAL DOCUMENT PAPER, INK SCREENS, WATERMARK, BACKGROUND DESIGNS, HOLOGRAM AND OTHER SECURITY FEATURES NOT LISTED AND DO EXCEED DOCUMENT SECURITY INDUSTRY GUIDELINES.