



ELECTRONIC COPY

LABORATORY GROWN DIAMOND REPORT

August 8, 2025  
IGI Report Number LG726522158  
Description LABORATORY GROWN DIAMOND  
Shape and Cutting Style PRINCESS CUT  
Measurements 5.57 X 5.52 X 3.96 MM

GRADING RESULTS

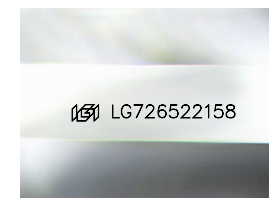
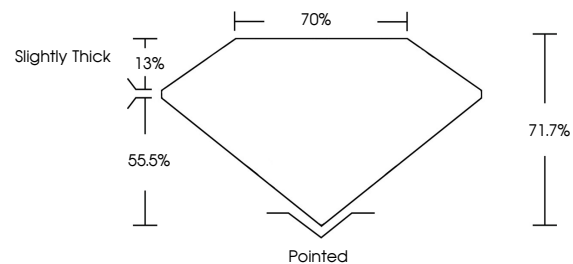
Carat Weight 1.08 CARAT  
Color Grade FANCY DEEP ORANGE  
Clarity Grade VS 1

ADDITIONAL GRADING INFORMATION

Polish EXCELLENT  
Symmetry EXCELLENT  
Fluorescence NONE  
Inscription(s) IGI LG726522158

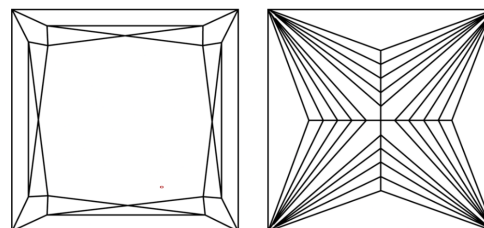
Comments: This Laboratory Grown Diamond was created by Chemical Vapor Deposition (CVD) growth process.  
Indications of post-growth treatment.

PROPORTIONS



Sample Image Used

CLARITY CHARACTERISTICS



KEY TO SYMBOLS

Red symbols indicate internal characteristics.  
Green symbols indicate external characteristics.

COLOR

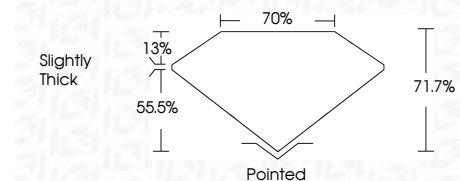
D E F G H I J Faint Very Light Light

CLARITY

IF VS 1-2 VS 1-2 SI 1-2 I 1-3  
Internally Flawless Very Very Slightly Included Very Slightly Included Slightly Included Included



August 8, 2025  
IGI Report Number LG726522158  
Description LABORATORY GROWN DIAMOND  
Shape and Cutting Style PRINCESS CUT  
Measurements 5.57 X 5.52 X 3.96 MM  
GRADING RESULTS  
Carat Weight 1.08 CARAT  
Color Grade FANCY DEEP ORANGE  
Clarity Grade VS 1



ADDITIONAL GRADING INFORMATION

Polish EXCELLENT  
Symmetry EXCELLENT  
Fluorescence NONE  
Inscription(s) IGI LG726522158  
Comments: This Laboratory Grown Diamond was created by Chemical Vapor Deposition (CVD) growth process.  
Indications of post-growth treatment.



August 8, 2025  
IGI Report No LG726522158  
PRINCESS CUT  
1.08 CARAT  
5.57 X 5.52 X 3.96 MM  
FANCY DEEP ORANGE  
VS 1  
71.7%  
70%  
Slightly Thick  
Pointed  
EXCELLENT  
EXCELLENT  
NONE  
IGI LG726522158  
Comments: This Laboratory Grown Diamond was created by Chemical Vapor Deposition (CVD) growth process.  
Indications of post-growth treatment.