



ELECTRONIC COPY

LG726524005
Report verification at igi.org



August 6, 2025

IGI Report Number **LG726524005**

Description **LABORATORY GROWN DIAMOND**

Shape and Cutting Style **ROUND BRILLIANT**

Measurements **16.49 - 16.56 X 10.13 MM**

GRADING RESULTS

Carat Weight **17.26 CARATS**

Color Grade **H**

Clarity Grade **SI 1**

Cut Grade **EXCELLENT**

August 6, 2025
IGI Report Number **LG726524005**
Description **LABORATORY GROWN DIAMOND**
Shape and Cutting Style **ROUND BRILLIANT**
Measurements **16.49 - 16.56 X 10.13 MM**

GRADING RESULTS

Carat Weight **17.26 CARATS**

Color Grade **H**

Clarity Grade **SI 1**

Cut Grade **EXCELLENT**

ADDITIONAL GRADING INFORMATION

Polish **EXCELLENT**

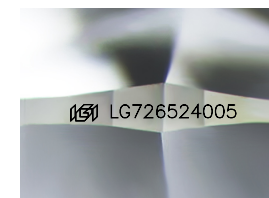
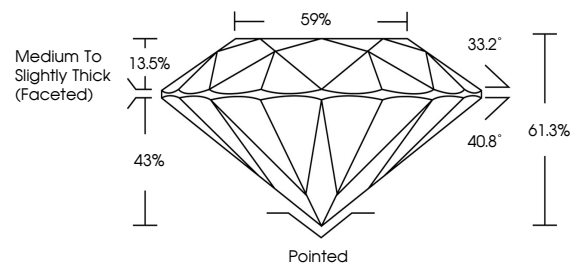
Symmetry **EXCELLENT**

Fluorescence **NONE**

Inscription(s) **IGI LG726524005**

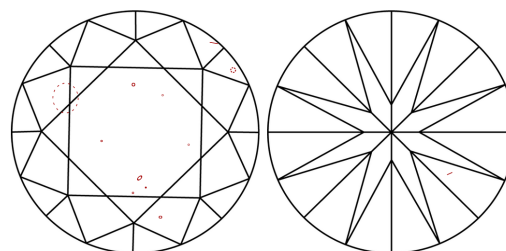
Comments: This Laboratory Grown Diamond was created by Chemical Vapor Deposition (CVD) growth process. Type IIa

PROPORTIONS



Sample Image Used

CLARITY CHARACTERISTICS



KEY TO SYMBOLS

Red symbols indicate internal characteristics.
Green symbols indicate external characteristics.

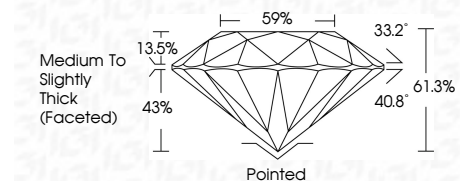
COLOR

D E F G H I J Faint Very Light Light

CLARITY

IF WS¹⁻² VS¹⁻² SI¹⁻² I¹⁻³

Internally Flawless Very Very Slightly Included Very Slightly Included Slightly Included Included



ADDITIONAL GRADING INFORMATION

Polish **EXCELLENT**

Symmetry **EXCELLENT**

Fluorescence **NONE**

Inscription(s) **IGI LG726524005**

Comments: This Laboratory Grown Diamond was created by Chemical Vapor Deposition (CVD) growth process. Type IIa



IGI



August 6, 2025
IGI Report No **LG726524005**
ROUND BRILLIANT
16.49 - 16.56 X 10.13 MM
17.26 CARATS
H
SI 1
EXCELLENT
61.3%
59%
Medium To Slightly Thick (Faceted)
Pointed
EXCELLENT
EXCELLENT
NONE
IGI LG726524005
Comments: This Laboratory Grown Diamond was created by Chemical Vapor Deposition (CVD) growth process. Type IIa