



**LABORATORY GROWN DIAMOND REPORT**

July 31, 2025  
 IGI Report Number **LG726525246**  
 Description **LABORATORY GROWN DIAMOND**  
 Shape and Cutting Style **ROUND BRILLIANT**  
 Measurements **5.12 - 5.16 X 3.05 MM**

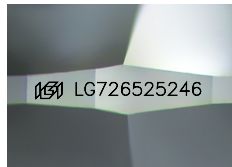
**GRADING RESULTS**

Carat Weight **0.49 CARAT**  
 Color Grade **D**  
 Clarity Grade **VS 1**  
 Cut Grade **EXCELLENT**

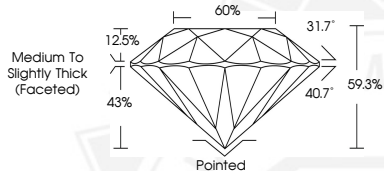
**ADDITIONAL GRADING INFORMATION**

Polish **EXCELLENT**  
 Symmetry **EXCELLENT**  
 Fluorescence **NONE**  
 Inscription(s) **IGI LG726525246**

Comments: As Grown - No indication of post-growth treatment. This Laboratory Grown Diamond was created by High Pressure High Temperature (HPHT) growth process. Type II



Sample Image Used



July 31, 2025  
 IGI Report Number **LG726525246**  
 ROUND BRILLIANT  
 LABORATORY GROWN DIAMOND  
 5.12 - 5.16 X 3.05 MM  
 Carat Weight **0.49 CARAT**  
 Color Grade **D**  
 Clarity Grade **VS 1**  
 Cut Grade **EXCELLENT**  
 Polish **EXCELLENT**  
 Symmetry **EXCELLENT**  
 Fluorescence **NONE**  
 Inscription(s) **IGI LG726525246**

Comments: As Grown - No indication of post-growth treatment. This Laboratory Grown Diamond was created by High Pressure High Temperature (HPHT) growth process. Type II



July 31, 2025  
 IGI Report Number **LG726525246**  
 ROUND BRILLIANT  
 LABORATORY GROWN DIAMOND  
 5.12 - 5.16 X 3.05 MM  
 Carat Weight **0.49 CARAT**  
 Color Grade **D**  
 Clarity Grade **VS 1**  
 Cut Grade **EXCELLENT**  
 Polish **EXCELLENT**  
 Symmetry **EXCELLENT**  
 Fluorescence **NONE**  
 Inscription(s) **IGI LG726525246**

Comments: As Grown - No indication of post-growth treatment. This Laboratory Grown Diamond was created by High Pressure High Temperature (HPHT) growth process. Type II

THIS DOCUMENT WAS PRODUCED WITH THE FOLLOWING SECURITY MEASURES: SPECIAL DOCUMENT PAPER, INK SCREENS, WATERMARK, BACKGROUND DESIGNS, HOLOGRAM AND OTHER SECURITY FEATURES NOT LISTED AND DO EXCEED DOCUMENT SECURITY INDUSTRY GUIDELINES.