



September 2, 2025

**IGI Report Number** LG726533989  
**SQUARE EMERALD CUT**  
**LABORATORY GROWN DIAMOND**  
**4.55 X 4.51 X 2.77 MM**

**0.49 CARAT**  
**D**  
**VS 1**  
**EXCELLENT**  
**EXCELLENT**  
**NONE**  
Inscription(s) LG726533989

Comments: As Grown - No indication of post-growth treatment. This Laboratory Grown Diamond was created by High Pressure High Temperature (HPHT) growth process. Type II

**LABORATORY GROWN DIAMOND REPORT**

September 2, 2025  
IGI Report Number **LG726533989**  
Description **LABORATORY GROWN DIAMOND**  
Shape and Cutting Style **SQUARE EMERALD CUT**  
Measurements **4.55 X 4.51 X 2.77 MM**

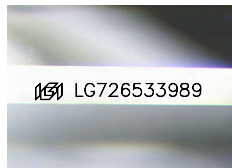
**GRADING RESULTS**

Carat Weight **0.49 CARAT**  
Color Grade **D**  
Clarity Grade **VS 1**

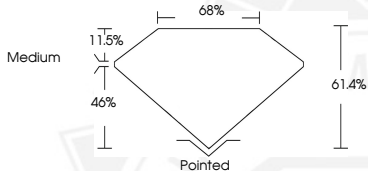
**ADDITIONAL GRADING INFORMATION**

Polish **EXCELLENT**  
Symmetry **EXCELLENT**  
Fluorescence **NONE**  
Inscription(s) LG726533989

Comments: As Grown - No indication of post-growth treatment. This Laboratory Grown Diamond was created by High Pressure High Temperature (HPHT) growth process. Type II



Sample Image Used



September 2, 2025

**IGI Report Number** LG726533989  
**SQUARE EMERALD CUT**  
**LABORATORY GROWN DIAMOND**  
**4.55 X 4.51 X 2.77 MM**

**0.49 CARAT**  
**D**  
**VS 1**  
**EXCELLENT**  
**EXCELLENT**  
**NONE**  
Inscription(s) LG726533989

Comments: As Grown - No indication of post-growth treatment. This Laboratory Grown Diamond was created by High Pressure High Temperature (HPHT) growth process. Type II

THIS DOCUMENT WAS PRODUCED WITH THE FOLLOWING SECURITY MEASURES: SPECIAL DOCUMENT PAPER, INK SCREENS, WATERMARK, BACKGROUND DESIGNS, HOLOGRAM AND OTHER SECURITY FEATURES NOT LISTED AND DO EXCEED DOCUMENT SECURITY INDUSTRY GUIDELINES.