



ELECTRONIC COPY

LG726541428
Report verification at igi.org



September 9, 2025

IGI Report Number **LG726541428**

Description **LABORATORY GROWN DIAMOND**

Shape and Cutting Style **CUT CORNERED RECTANGULAR MODIFIED BRILLIANT**

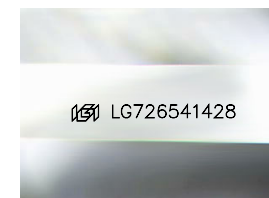
Measurements **9.79 X 6.73 X 4.67 MM**

GRADING RESULTS

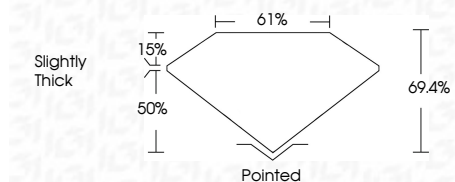
Carat Weight **2.62 CARATS**

Color Grade **FANCY VIVID PINK**

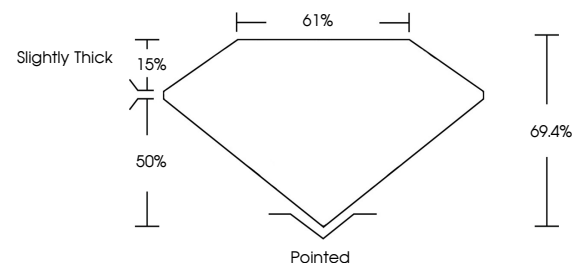
Clarity Grade **VS 2**



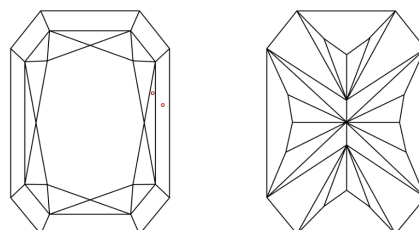
Sample Image Used



PROPORTIONS



CLARITY CHARACTERISTICS



KEY TO SYMBOLS

Red symbols indicate internal characteristics.
Green symbols indicate external characteristics.

COLOR

D E F G H I J Faint Very Light Light

CLARITY

IF VS¹⁻² VS¹⁻² SI¹⁻² I¹⁻³
Internally Flawless Very Very Slightly Included Very Slightly Included Slightly Included Included

ADDITIONAL GRADING INFORMATION

Polish **EXCELLENT**

Symmetry **EXCELLENT**

Fluorescence **SLIGHT**

Inscription(s) **IGI LG726541428**

Comments: This Laboratory Grown Diamond was created by Chemical Vapor Deposition (CVD) growth process. Indications of post-growth treatment.



September 9, 2025
IGI Report No LG726541428
CUT CORNERED RECT. MODIFIED BRILLIANT
9.79 X 6.73 X 4.67 MM
2.62 CARATS
FANCY VIVID PINK
VS 2
69.4%
61%
Slightly Thick
Pointed
EXCELLENT
EXCELLENT
SLIGHT
IGI LG726541428
Comments: This Laboratory Grown Diamond was created by Chemical Vapor Deposition (CVD) growth process. Indications of post-growth treatment.