



ELECTRONIC COPY

LG726544798
Report verification at igi.org

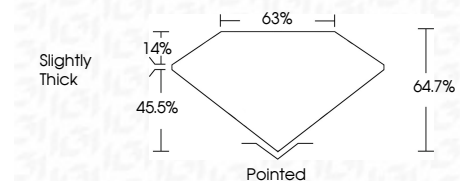


August 10, 2025
IGI Report Number LG726544798
Description LABORATORY GROWN DIAMOND
Shape and Cutting Style CUT CORNERED RECTANGULAR MODIFIED BRILLIANT

Measurements 10.94 X 7.63 X 4.94 MM

GRADING RESULTS

Carat Weight 3.57 CARATS
Color Grade FANCY VIVID BLUE
Clarity Grade VS 2



ADDITIONAL GRADING INFORMATION

Polish EXCELLENT
Symmetry EXCELLENT
Fluorescence VERY SLIGHT
Inscription(s) IGI LG726544798

Comments: This Laboratory Grown Diamond was created by Chemical Vapor Deposition (CVD) growth process. Indications of post-growth treatment.



August 10, 2025
IGI Report No LG726544798
CUT CORNERED RECT. MODIFIED BRILLIANT
10.94 X 7.63 X 4.94 MM
3.57 CARATS
FANCY VIVID BLUE
VS 2
64.7%
63%
Slightly Thick
Pointed
EXCELLENT
EXCELLENT
VERY SLIGHT
IGI LG726544798
Comments: This Laboratory Grown Diamond was created by Chemical Vapor Deposition (CVD) growth process. Indications of post-growth treatment.

LABORATORY GROWN DIAMOND REPORT

August 10, 2025
IGI Report Number LG726544798
Description LABORATORY GROWN DIAMOND
Shape and Cutting Style CUT CORNERED RECTANGULAR MODIFIED BRILLIANT
Measurements 10.94 X 7.63 X 4.94 MM

GRADING RESULTS

Carat Weight 3.57 CARATS
Color Grade FANCY VIVID BLUE
Clarity Grade VS 2

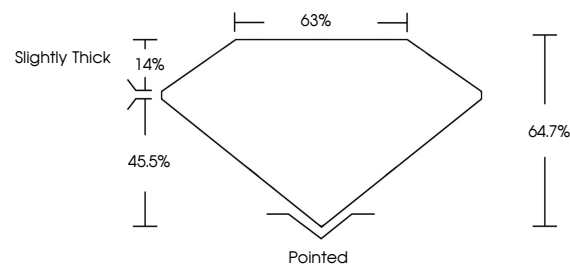
ADDITIONAL GRADING INFORMATION

Polish EXCELLENT
Symmetry EXCELLENT
Fluorescence VERY SLIGHT

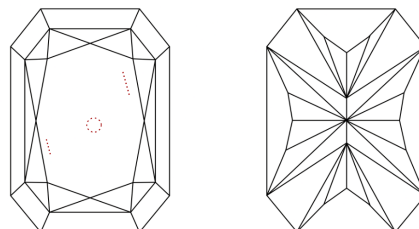
Inscription(s) IGI LG726544798

Comments: This Laboratory Grown Diamond was created by Chemical Vapor Deposition (CVD) growth process. Indications of post-growth treatment.

PROPORTIONS

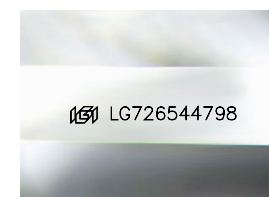


CLARITY CHARACTERISTICS



KEY TO SYMBOLS

Red symbols indicate internal characteristics.
Green symbols indicate external characteristics.



Sample Image Used

COLOR

D E F G H I J Faint Very Light Light

CLARITY

IF VS 1-2 VS 1-2 SI 1-2 I 1-3
Internally Flawless Very Very Slightly Included Very Slightly Included Slightly Included Included