



ELECTRONIC COPY

LG726548935
Report verification at igi.org



August 12, 2025
IGI Report Number **LG726548935**
Description **LABORATORY GROWN DIAMOND**
Shape and Cutting Style **OVAL BRILLIANT**
Measurements **8.05 X 5.60 X 3.55 MM**
GRADING RESULTS
Carat Weight **1.03 CARAT**
Color Grade **FANCY DEEP ORANGE**
Clarity Grade **VS 1**

LABORATORY GROWN DIAMOND REPORT

August 12, 2025
IGI Report Number **LG726548935**
Description **LABORATORY GROWN DIAMOND**
Shape and Cutting Style **OVAL BRILLIANT**
Measurements **8.05 X 5.60 X 3.55 MM**

GRADING RESULTS

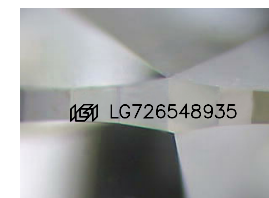
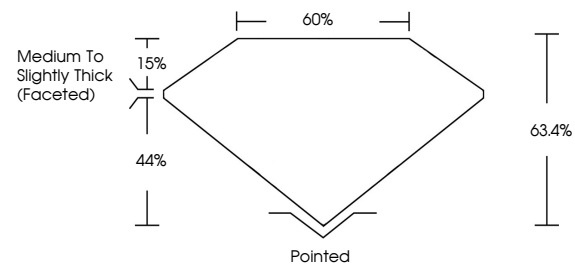
Carat Weight **1.03 CARAT**
Color Grade **FANCY DEEP ORANGE**
Clarity Grade **VS 1**

ADDITIONAL GRADING INFORMATION

Polish **EXCELLENT**
Symmetry **EXCELLENT**
Fluorescence **NONE**
Inscription(s) **IGI LG726548935**

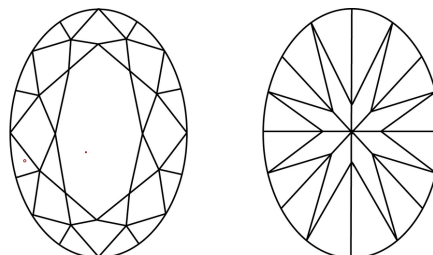
Comments: This Laboratory Grown Diamond was created by Chemical Vapor Deposition (CVD) growth process.
Indications of post-growth treatment.

PROPORTIONS



Sample Image Used

CLARITY CHARACTERISTICS



KEY TO SYMBOLS

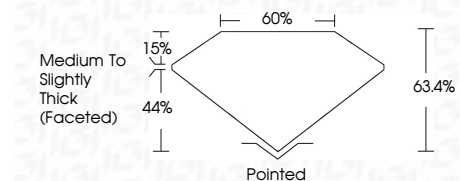
Red symbols indicate internal characteristics.
Green symbols indicate external characteristics.

COLOR

D E F G H I J Faint Very Light Light

CLARITY

IF	VS ¹⁻²	VS ¹⁻²	SI ¹⁻²	I ¹⁻³
Internally Flawless	Very Very Slightly Included	Very Slightly Included	Slightly Included	Included



ADDITIONAL GRADING INFORMATION

Polish **EXCELLENT**
Symmetry **EXCELLENT**
Fluorescence **NONE**
Inscription(s) **IGI LG726548935**
Comments: This Laboratory Grown Diamond was created by Chemical Vapor Deposition (CVD) growth process.
Indications of post-growth treatment.



August 12, 2025
IGI Report No LG726548935
OVAL BRILLIANT
8.05 X 5.60 X 3.55 MM
1.03 CARAT
FANCY DEEP ORANGE
Color Grade
Clarity Grade VS 1
Depth 44%
Table 60%
Girdle Medium to Slightly Thick (Faceted)
Culet Pointed
Polish EXCELLENT
Symmetry EXCELLENT
Fluorescence NONE
Inscription(s) IGI LG726548935
Comments: This Laboratory Grown Diamond was created by Chemical Vapor Deposition (CVD) growth process.
Indications of post-growth treatment.