



ELECTRONIC COPY

LG726548961
Report verification at igi.org



August 12, 2025

IGI Report Number **LG726548961**

Description **LABORATORY GROWN DIAMOND**

Shape and Cutting Style **CUT CORNERED
RECTANGULAR MODIFIED
BRILLIANT**

Measurements **13.59 X 9.43 X 6.54 MM**

GRADING RESULTS

Carat Weight **8.10 CARATS**

Color Grade **FANCY VIVID YELLOW**

Clarity Grade **VS 1**

LABORATORY GROWN DIAMOND REPORT

August 12, 2025

IGI Report Number **LG726548961**

Description **LABORATORY GROWN DIAMOND**

Shape and Cutting Style **CUT CORNERED RECTANGULAR
MODIFIED BRILLIANT**

Measurements **13.59 X 9.43 X 6.54 MM**

GRADING RESULTS

Carat Weight **8.10 CARATS**

Color Grade **FANCY VIVID YELLOW**

Clarity Grade **VS 1**

ADDITIONAL GRADING INFORMATION

Polish **EXCELLENT**

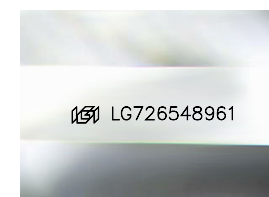
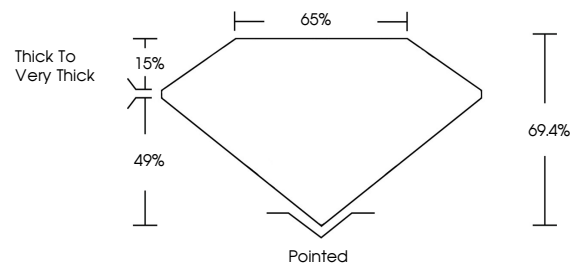
Symmetry **EXCELLENT**

Fluorescence **NONE**

Inscription(s) **IGI LG726548961**

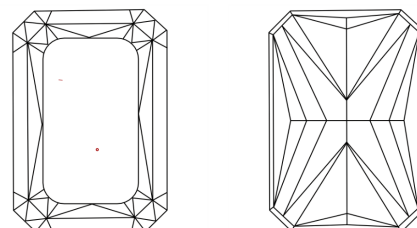
Comments: This Laboratory Grown Diamond was created by Chemical Vapor Deposition (CVD) growth process.

PROPORTIONS



Sample Image Used

CLARITY CHARACTERISTICS



KEY TO SYMBOLS

Red symbols indicate internal characteristics.
Green symbols indicate external characteristics.

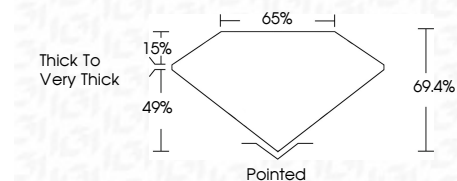
COLOR

D E F G H I J Faint Very Light Light

CLARITY

IF WS¹⁻² VS¹⁻² SI¹⁻² I¹⁻³

Internally Flawless Very Very Slightly Included Very Slightly Included Slightly Included Included



ADDITIONAL GRADING INFORMATION

Polish **EXCELLENT**

Symmetry **EXCELLENT**

Fluorescence **NONE**

Inscription(s) **IGI LG726548961**

Comments: This Laboratory Grown Diamond was created by Chemical Vapor Deposition (CVD) growth process.



IGI



August 12, 2025
IGI Report No LG726548961
CUT CORNERED RECT. MODIFIED BRILLIANT
8.10 CARATS
13.59 X 9.43 X 6.54 MM
Color Grade FANCY VIVID YELLOW
Clarity Grade VS 1
Depth 49.4%
Table 65%
Girdle Thick to Very Thick
Culet Pointed
Polish EXCELLENT
Symmetry EXCELLENT
Fluorescence NONE
Inscription(s) IGI LG726548961
Comments: This Laboratory Grown Diamond was created by Chemical Vapor Deposition (CVD) growth process.