



**ELECTRONIC COPY**

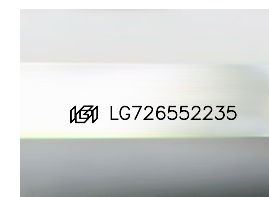
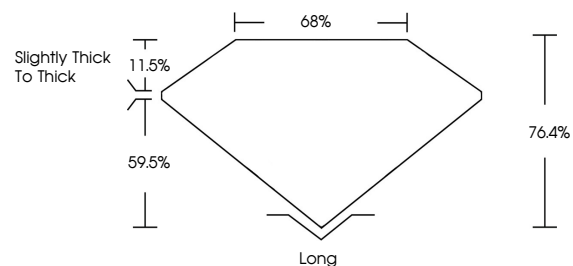
LG726552235  
Report verification at [igi.org](http://igi.org)



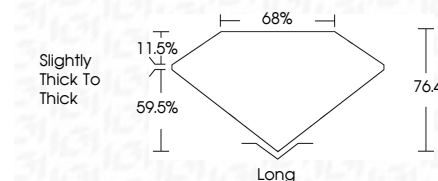
August 11, 2025  
IGI Report Number **LG726552235**  
Description **LABORATORY GROWN DIAMOND**  
Shape and Cutting Style **EMERALD CUT**  
Measurements **6.84 X 5.01 X 3.83 MM**  
**GRADING RESULTS**  
Carat Weight **1.10 CARAT**  
Color Grade **FANCY VIVID BLUE**  
Clarity Grade **VS 1**

August 11, 2025  
IGI Report Number **LG726552235**  
Description **LABORATORY GROWN DIAMOND**  
Shape and Cutting Style **EMERALD CUT**  
Measurements **6.84 X 5.01 X 3.83 MM**  
**GRADING RESULTS**  
Carat Weight **1.10 CARAT**  
Color Grade **FANCY VIVID BLUE**  
Clarity Grade **VS 1**

**PROPORTIONS**



Sample Image Used



**ADDITIONAL GRADING INFORMATION**

Polish **VERY GOOD**  
Symmetry **VERY GOOD**  
Fluorescence **NONE**  
Inscription(s) **IGI LG726552235**

Comments: This Laboratory Grown Diamond was created by Chemical Vapor Deposition (CVD) growth process.  
Indications of post-growth treatment.

**COLOR**

D E F G H I J Faint Very Light Light

**CLARITY**

IF	VS <sup>1-2</sup>	VS <sup>1-2</sup>	SI <sup>1-2</sup>	I <sup>1-3</sup>
Internally Flawless	Very Very Slightly Included	Very Slightly Included	Slightly Included	Included

**ADDITIONAL GRADING INFORMATION**

Polish **VERY GOOD**  
Symmetry **VERY GOOD**  
Fluorescence **NONE**  
Inscription(s) **IGI LG726552235**  
Comments: This Laboratory Grown Diamond was created by Chemical Vapor Deposition (CVD) growth process.  
Indications of post-growth treatment.



**IGI**

August 11, 2025  
IGI Report No **LG726552235**  
**EMERALD CUT**  
1.10 CARAT  
6.84 X 5.01 X 3.83 MM  
Color Grade **FANCY VIVID BLUE**  
Clarity Grade **VS 1**  
Depth **76.4%**  
Table **68%**  
Girdle **Slightly Thick To Thick**  
Culet **Long**  
Polish **VERY GOOD**  
Symmetry **VERY GOOD**  
Fluorescence **NONE**  
Inscription(s) **IGI LG726552235**

Comments: This Laboratory Grown Diamond was created by Chemical Vapor Deposition (CVD) growth process.  
Indications of post-growth treatment.