



INTERNATIONAL GEMOLOGICAL INSTITUTE

LABORATORY GROWN DIAMOND REPORT

August 5, 2025
IGI Report Number **LG726556433**
Description **LABORATORY GROWN DIAMOND**
Shape and Cutting Style **MARQUISE BRILLIANT**
Measurements **8.34 X 4.24 X 2.55 MM**

GRADING RESULTS

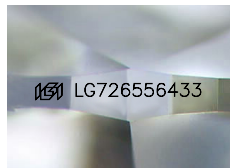
Carat Weight **0.52 CARAT**
Color Grade **E**
Clarity Grade **INTERNALLY FLAWLESS**

ADDITIONAL GRADING INFORMATION

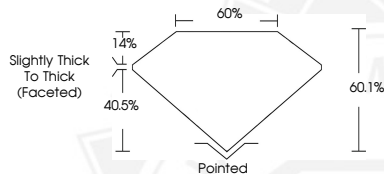
Polish **EXCELLENT**
Symmetry **EXCELLENT**
Fluorescence **NONE**
Inscription(s) **IGI LG726556433**

Comments: As Grown - No indication of post-growth treatment.
This Laboratory Grown Diamond was created by High Pressure High Temperature (HPHT) growth process.
Type II

ELECTRONIC COPY



Sample Image Used



August 5, 2025
IGI Report Number **LG726556433**
MARQUISE BRILLIANT
LABORATORY GROWN DIAMOND
8.34 X 4.24 X 2.55 MM
Carat Weight **0.52 CARAT**
Color Grade **E**
Clarity Grade **I.F.**
Polish **EXCELLENT**
Symmetry **EXCELLENT**
Fluorescence **NONE**
Inscription(s) **IGI LG726556433**

Comments: As Grown - No indication of post-growth treatment. This Laboratory Grown Diamond was created by High Pressure High Temperature (HPHT) growth process. Type II



August 5, 2025
IGI Report Number **LG726556433**
MARQUISE BRILLIANT
LABORATORY GROWN DIAMOND
8.34 X 4.24 X 2.55 MM
Carat Weight **0.52 CARAT**
Color Grade **E**
Clarity Grade **I.F.**
Polish **EXCELLENT**
Symmetry **EXCELLENT**
Fluorescence **NONE**
Inscription(s) **IGI LG726556433**

Comments: As Grown - No indication of post-growth treatment. This Laboratory Grown Diamond was created by High Pressure High Temperature (HPHT) growth process. Type II



THIS DOCUMENT WAS PRODUCED WITH THE FOLLOWING SECURITY MEASURES: SPECIAL DOCUMENT PAPER, INK SCREENS, WATERMARK, BACKGROUND DESIGNS, HOLOGRAM AND OTHER SECURITY FEATURES NOT LISTED AND DO EXCEED DOCUMENT SECURITY INDUSTRY GUIDELINES.

For terms & conditions and to verify this report, please visit www.igi.org