



ELECTRONIC COPY

LG726564589
Report verification at igi.org



August 12, 2025
IGI Report Number **LG726564589**
Description **LABORATORY GROWN DIAMOND**
Shape and Cutting Style **PRINCESS CUT**
Measurements **5.56 X 5.43 X 3.82 MM**
GRADING RESULTS
Carat Weight **1.02 CARAT**
Color Grade **FANCY DEEP ORANGE**
Clarity Grade **VVS 1**

LABORATORY GROWN DIAMOND REPORT

August 12, 2025
IGI Report Number **LG726564589**
Description **LABORATORY GROWN DIAMOND**
Shape and Cutting Style **PRINCESS CUT**
Measurements **5.56 X 5.43 X 3.82 MM**

GRADING RESULTS

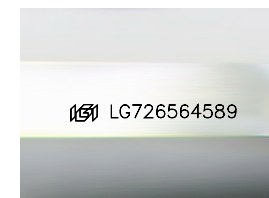
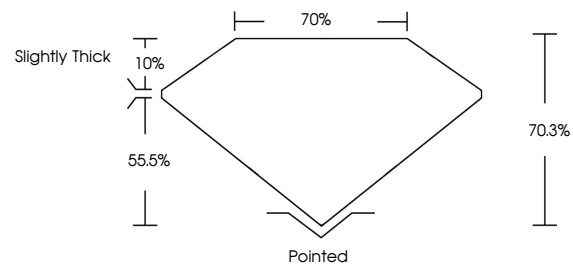
Carat Weight **1.02 CARAT**
Color Grade **FANCY DEEP ORANGE**
Clarity Grade **VVS 1**

ADDITIONAL GRADING INFORMATION

Polish **EXCELLENT**
Symmetry **EXCELLENT**
Fluorescence **NONE**
Inscription(s) **IGI LG726564589**

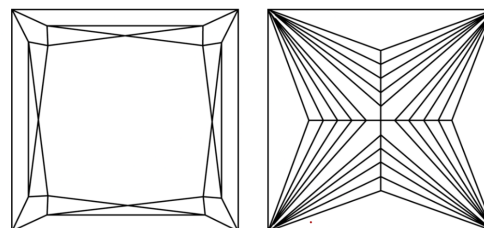
Comments: This Laboratory Grown Diamond was created by Chemical Vapor Deposition (CVD) growth process.
Indications of post-growth treatment.

PROPORTIONS



Sample Image Used

CLARITY CHARACTERISTICS



KEY TO SYMBOLS

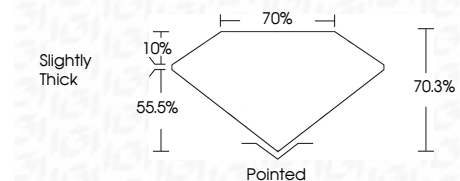
Red symbols indicate internal characteristics.
Green symbols indicate external characteristics.

COLOR

D E F G H I J Faint Very Light Light

CLARITY

IF	VS ¹⁻²	VS ¹⁻²	SI ¹⁻²	I ¹⁻³
Internally Flawless	Very Very Slightly Included	Very Slightly Included	Slightly Included	Included



ADDITIONAL GRADING INFORMATION

Polish **EXCELLENT**
Symmetry **EXCELLENT**
Fluorescence **NONE**
Inscription(s) **IGI LG726564589**
Comments: This Laboratory Grown Diamond was created by Chemical Vapor Deposition (CVD) growth process.
Indications of post-growth treatment.



August 12, 2025
IGI Report No LG726564589
PRINCESS CUT
1.02 CARAT
5.56 X 5.43 X 3.82 MM
FANCY DEEP ORANGE
VVS 1
70.3%
Slightly Thick
Pointed
EXCELLENT
EXCELLENT
NONE
IGI LG726564589
Comments: This Laboratory Grown Diamond was created by Chemical Vapor Deposition (CVD) growth process.
Indications of post-growth treatment.