



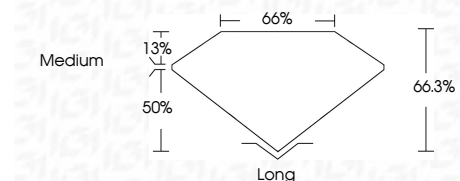
ELECTRONIC COPY

LG726570420
Report verification at igi.org



August 6, 2025
IGI Report Number LG726570420
Description LABORATORY GROWN DIAMOND
Shape and Cutting Style EMERALD CUT
Measurements 13.20 X 9.26 X 6.14 MM

GRADING RESULTS
Carat Weight 7.54 CARATS
Color Grade F
Clarity Grade VS 1



ADDITIONAL GRADING INFORMATION
Polish EXCELLENT
Symmetry EXCELLENT
Fluorescence NONE
Inscription(s) IGI LG726570420
Comments: This Laboratory Grown Diamond was created by Chemical Vapor Deposition (CVD) growth process. Type IIa



August 6, 2025
IGI Report No LG726570420
EMERALD CUT
13.20 X 9.26 X 6.14 MM
7.54 CARATS
F
VS 1
66.3%
66%
Medium
Long
EXCELLENT
EXCELLENT
NONE
IGI LG726570420
Comments: This Laboratory Grown Diamond was created by Chemical Vapor Deposition (CVD) growth process. Type IIa

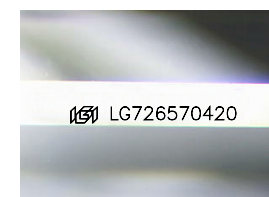
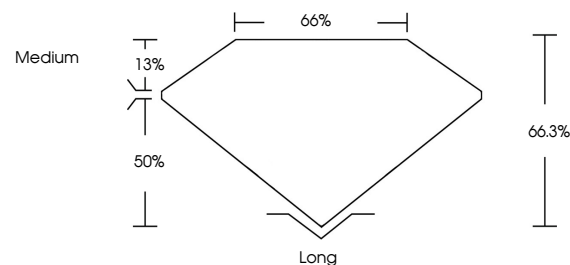
August 6, 2025
IGI Report Number LG726570420
Description LABORATORY GROWN DIAMOND
Shape and Cutting Style EMERALD CUT
Measurements 13.20 X 9.26 X 6.14 MM

GRADING RESULTS
Carat Weight 7.54 CARATS
Color Grade F
Clarity Grade VS 1

ADDITIONAL GRADING INFORMATION
Polish EXCELLENT
Symmetry EXCELLENT
Fluorescence NONE
Inscription(s) IGI LG726570420

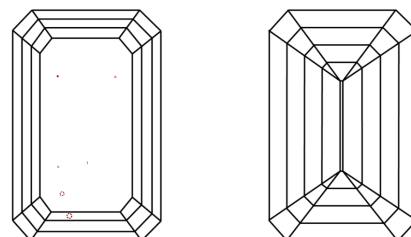
Comments: This Laboratory Grown Diamond was created by Chemical Vapor Deposition (CVD) growth process. Type IIa

PROPORTIONS



Sample Image Used

CLARITY CHARACTERISTICS



KEY TO SYMBOLS

Red symbols indicate internal characteristics.
Green symbols indicate external characteristics.

COLOR

D E F G H I J Faint Very Light Light

CLARITY

IF VS 1-2 VS 1-2 SI 1-2 I 1-3
Internally Flawless Very Very Slightly Included Very Slightly Included Slightly Included Included

