



**ELECTRONIC COPY**

LG727517908  
Report verification at igi.org



August 8, 2025

IGI Report Number **LG727517908**

Description **LABORATORY GROWN DIAMOND**

Shape and Cutting Style **CUT CORNERED  
RECTANGULAR MODIFIED  
BRILLIANT**

Measurements **9.77 X 7.33 X 5.10 MM**

**GRADING RESULTS**

Carat Weight **3.07 CARATS**

Color Grade **D**

Clarity Grade **VVS 1**

**LABORATORY GROWN DIAMOND REPORT**

August 8, 2025

IGI Report Number **LG727517908**

Description **LABORATORY GROWN DIAMOND**

Shape and Cutting Style **CUT CORNERED RECTANGULAR  
MODIFIED BRILLIANT**

Measurements **9.77 X 7.33 X 5.10 MM**

**GRADING RESULTS**

Carat Weight **3.07 CARATS**

Color Grade **D**

Clarity Grade **VVS 1**

**ADDITIONAL GRADING INFORMATION**

Polish **EXCELLENT**

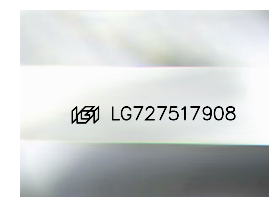
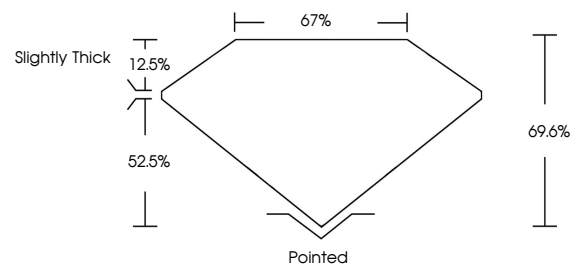
Symmetry **EXCELLENT**

Fluorescence **NONE**

Inscription(s) **IGI LG727517908**

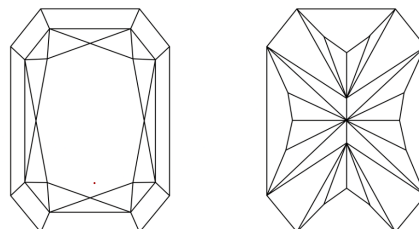
Comments: This Laboratory Grown Diamond was created by Chemical Vapor Deposition (CVD) growth process.  
Type IIa

**PROPORTIONS**



Sample Image Used

**CLARITY CHARACTERISTICS**



**KEY TO SYMBOLS**

Red symbols indicate internal characteristics.  
Green symbols indicate external characteristics.

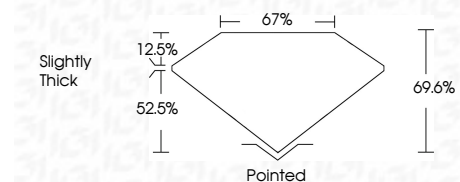
**COLOR**

D E F G H I J Faint Very Light Light

**CLARITY**

IF WS<sup>1-2</sup> VS<sup>1-2</sup> SI<sup>1-2</sup> I<sup>1-3</sup>

Internally Flawless Very Very Slightly Included Very Slightly Included Slightly Included Included



**ADDITIONAL GRADING INFORMATION**

Polish **EXCELLENT**

Symmetry **EXCELLENT**

Fluorescence **NONE**

Inscription(s) **IGI LG727517908**

Comments: This Laboratory Grown Diamond was created by Chemical Vapor Deposition (CVD) growth process.  
Type IIa



**IGI**



August 8, 2025  
IGI Report No LG727517908  
CUT CORNERED RECT. MODIFIED BRILLIANT

3.07 CARATS  
D

Carat Weight  
Color Grade  
Clarity Grade  
Table  
Girdle  
Slightly Thick

9.77 X 7.33 X 5.10 MM  
69.6%  
67%

Pointed  
EXCELLENT  
EXCELLENT  
NONE  
IGI LG727517908

Comments: This Laboratory Grown Diamond was created by Chemical Vapor Deposition (CVD) growth process.  
Type IIa