



ELECTRONIC COPY

LG727534413
Report verification at igi.org



August 12, 2025
IGI Report Number **LG727534413**
Description **LABORATORY GROWN DIAMOND**
Shape and Cutting Style **PRINCESS CUT**
Measurements **8.91 X 8.75 X 6.06 MM**

GRADING RESULTS

Carat Weight **4.10 CARATS**
Color Grade **F**
Clarity Grade **VS 1**

August 12, 2025
IGI Report Number **LG727534413**
Description **LABORATORY GROWN DIAMOND**
Shape and Cutting Style **PRINCESS CUT**
Measurements **8.91 X 8.75 X 6.06 MM**

GRADING RESULTS

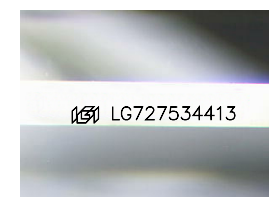
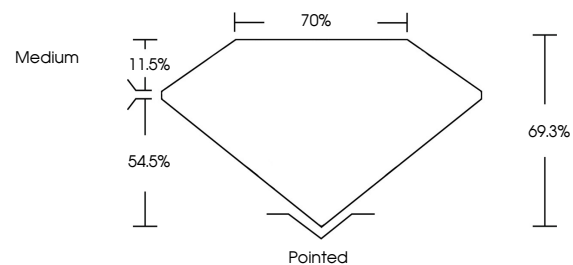
Carat Weight **4.10 CARATS**
Color Grade **F**
Clarity Grade **VS 1**

ADDITIONAL GRADING INFORMATION

Polish **EXCELLENT**
Symmetry **EXCELLENT**
Fluorescence **NONE**
Inscription(s) **IGI LG727534413**

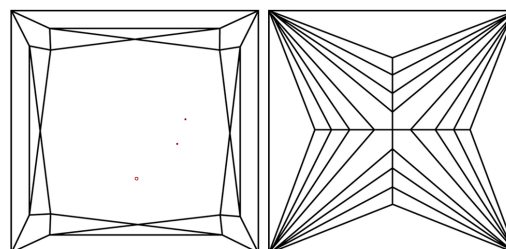
Comments: This Laboratory Grown Diamond was created by Chemical Vapor Deposition (CVD) growth process.
Type IIa

PROPORTIONS



Sample Image Used

CLARITY CHARACTERISTICS



KEY TO SYMBOLS

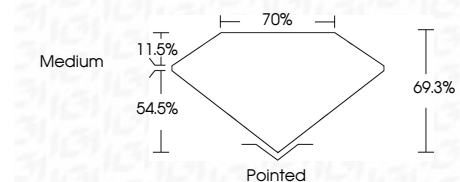
Red symbols indicate internal characteristics.
Green symbols indicate external characteristics.

COLOR

D E F G H I J Faint Very Light Light

CLARITY

IF	VS ¹⁻²	VS ¹⁻²	SI ¹⁻²	I ¹⁻³
Internally Flawless	Very Very Slightly Included	Very Slightly Included	Slightly Included	Included



ADDITIONAL GRADING INFORMATION

Polish **EXCELLENT**
Symmetry **EXCELLENT**
Fluorescence **NONE**
Inscription(s) **IGI LG727534413**
Comments: This Laboratory Grown Diamond was created by Chemical Vapor Deposition (CVD) growth process.
Type IIa



IGI



August 12, 2025
IGI Report No LG727534413
PRINCESS CUT
8.91 X 8.75 X 6.06 MM
4.10 CARATS
F
Color Grade
VS 1
Clarity Grade
69.3%
70%
Medium
Pointed
EXCELLENT
EXCELLENT
NONE
IGI LG727534413
Comments: This Laboratory Grown Diamond was created by Chemical Vapor Deposition (CVD) growth process.
Type IIa