



INTERNATIONAL GEMOLOGICAL INSTITUTE

ELECTRONIC COPY

LABORATORY GROWN DIAMOND REPORT

August 8, 2025

IGI Report Number

LG727547584

Description

LABORATORY GROWN DIAMOND

Shape and Cutting Style

ROUND BRILLIANT

Measurements

5.00 - 5.02 X 3.03 MM

GRADING RESULTS

Carat Weight

0.47 CARAT

Color Grade

H

Clarity Grade

VS 2

Cut Grade

EXCELLENT

ADDITIONAL GRADING INFORMATION

Polish

GOOD

Symmetry

VERY GOOD

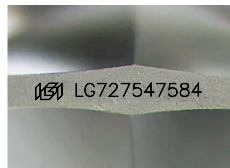
Fluorescence

NONE

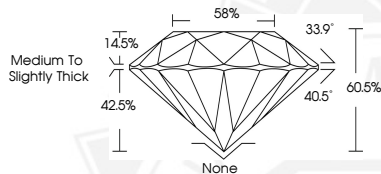
Inscription(s)

IGI LG727547584

Comments: This Laboratory Grown Diamond was created by Chemical Vapor Deposition (CVD) growth process. Type IIa



Sample Image Used



August 8, 2025

IGI Report Number LG727547584

ROUND BRILLIANT

LABORATORY GROWN DIAMOND

5.00 - 5.02 X 3.03 MM

Carat Weight 0.47 CARAT

Color Grade H

Clarity Grade VS 2

Cut Grade EXCELLENT

Polish GOOD

Symmetry VERY GOOD

Fluorescence NONE

Inscription(s) IGI LG727547584

Comments: This Laboratory Grown Diamond was created by Chemical Vapor Deposition (CVD) growth process. Type IIa



August 8, 2025

IGI Report Number LG727547584

ROUND BRILLIANT

LABORATORY GROWN DIAMOND

5.00 - 5.02 X 3.03 MM

Carat Weight 0.47 CARAT

Color Grade H

Clarity Grade VS 2

Cut Grade EXCELLENT

Polish GOOD

Symmetry VERY GOOD

Fluorescence NONE

Inscription(s) IGI LG727547584

Comments: This Laboratory Grown Diamond was created by Chemical Vapor Deposition (CVD) growth process. Type IIa



THIS DOCUMENT WAS PRODUCED WITH THE FOLLOWING SECURITY MEASURES: SPECIAL DOCUMENT PAPER, INK SCREENS, WATERMARK, BACKGROUND DESIGNS, HOLOGRAM AND OTHER SECURITY FEATURES NOT LISTED AND DO EXCEED DOCUMENT SECURITY INDUSTRY GUIDELINES.

For terms & conditions and to verify this report, please visit www.igi.org