



August 7, 2025

IGI Report Number **LG727547590**

ROUND BRILLIANT

LABORATORY GROWN DIAMOND

5.78 - 5.87 X 3.37 MM

| | |
|----------------|------------------------|
| Carat Weight | 0.70 CARAT |
| Color Grade | E |
| Clarity Grade | VS 1 |
| Cut Grade | VERY GOOD |
| Polish | GOOD |
| Symmetry | VERY GOOD |
| Fluorescence | NONE |
| Inscription(s) | IGI LG727547590 |

Comments: This Laboratory Grown Diamond was created by Chemical Vapor Deposition (CVD) growth process. Type IIa

LABORATORY GROWN DIAMOND REPORT

August 7, 2025
 IGI Report Number **LG727547590**
 Description **LABORATORY GROWN DIAMOND**
 Shape and Cutting Style **ROUND BRILLIANT**
 Measurements **5.78 - 5.87 X 3.37 MM**

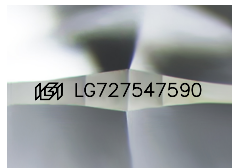
GRADING RESULTS

Carat Weight **0.70 CARAT**
 Color Grade **E**
 Clarity Grade **VS 1**
 Cut Grade **VERY GOOD**

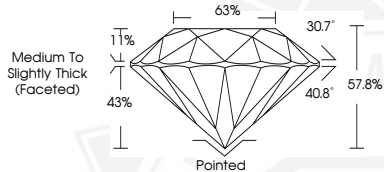
ADDITIONAL GRADING INFORMATION

Polish **GOOD**
 Symmetry **VERY GOOD**
 Fluorescence **NONE**
 Inscription(s) **IGI LG727547590**

Comments: This Laboratory Grown Diamond was created by Chemical Vapor Deposition (CVD) growth process. Type IIa



Sample Image Used



August 7, 2025

IGI Report Number **LG727547590**

ROUND BRILLIANT

LABORATORY GROWN DIAMOND

5.78 - 5.87 X 3.37 MM

| | |
|----------------|------------------------|
| Carat Weight | 0.70 CARAT |
| Color Grade | E |
| Clarity Grade | VS 1 |
| Cut Grade | VERY GOOD |
| Polish | GOOD |
| Symmetry | VERY GOOD |
| Fluorescence | NONE |
| Inscription(s) | IGI LG727547590 |

Comments: This Laboratory Grown Diamond was created by Chemical Vapor Deposition (CVD) growth process. Type IIa



THIS DOCUMENT WAS PRODUCED WITH THE FOLLOWING SECURITY MEASURES: SPECIAL DOCUMENT PAPER, INK SCREENS, WATERMARK, BACKGROUND DESIGNS, HOLOGRAM AND OTHER SECURITY FEATURES NOT LISTED AND DO EXCEED DOCUMENT SECURITY INDUSTRY GUIDELINES.