



ELECTRONIC COPY

LG727552105
Report verification at igi.org



August 8, 2025

IGI Report Number **LG727552105**

Description **LABORATORY GROWN DIAMOND**

Shape and Cutting Style **ROUND BRILLIANT**

Measurements **9.72 - 9.78 X 6.06 MM**

GRADING RESULTS

Carat Weight **3.58 CARATS**

Color Grade **E**

Clarity Grade **VVS 2**

Cut Grade **IDEAL**

August 8, 2025

IGI Report Number **LG727552105**

Description **LABORATORY GROWN DIAMOND**

Shape and Cutting Style **ROUND BRILLIANT**

Measurements **9.72 - 9.78 X 6.06 MM**

GRADING RESULTS

Carat Weight **3.58 CARATS**

Color Grade **E**

Clarity Grade **VVS 2**

Cut Grade **IDEAL**

ADDITIONAL GRADING INFORMATION

Polish **EXCELLENT**

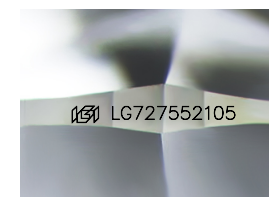
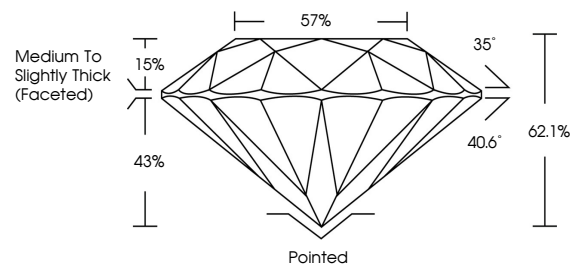
Symmetry **EXCELLENT**

Fluorescence **NONE**

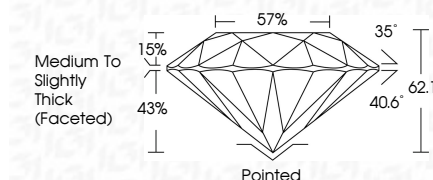
Inscription(s) **LG727552105**

Comments: This Laboratory Grown Diamond was created by Chemical Vapor Deposition (CVD) growth process. Type IIa

PROPORTIONS



Sample Image Used



COLOR

D E F G H I J Faint Very Light Light

CLARITY

IF WS¹⁻² VS¹⁻² SI¹⁻² I¹⁻³

Internally Flawless Very Very Slightly Included Very Slightly Included Slightly Included Included

ADDITIONAL GRADING INFORMATION

Polish **EXCELLENT**

Symmetry **EXCELLENT**

Fluorescence **NONE**

Inscription(s) **LG727552105**

Comments: This Laboratory Grown Diamond was created by Chemical Vapor Deposition (CVD) growth process. Type IIa



IGI



August 8, 2025
IGI Report No LG727552105
ROUND BRILLIANT

3.58 CARATS
E

9.72 - 9.78 X 6.06 MM
VVS 2
IDEAL

62.1%
57%
Medium To Slightly Thick (Faceted)

Pointed
EXCELLENT
EXCELLENT
NONE

None LG727552105

Comments: This Laboratory Grown Diamond was created by Chemical Vapor Deposition (CVD) growth process. Type IIa