



ELECTRONIC COPY

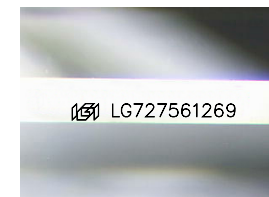
LG727561269
Report verification at igi.org



August 13, 2025
IGI Report Number **LG727561269**
Description **LABORATORY GROWN DIAMOND**
Shape and Cutting Style **EMERALD CUT**
Measurements **10.96 X 7.37 X 4.94 MM**

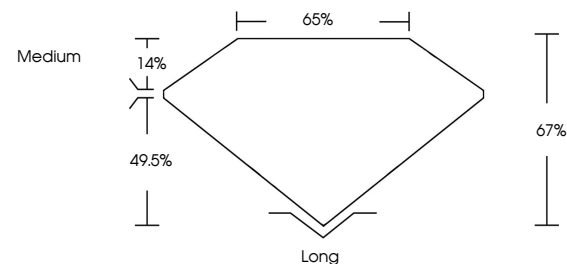
GRADING RESULTS

Carat Weight **4.05 CARATS**
Color Grade **D**
Clarity Grade **VVS 1**

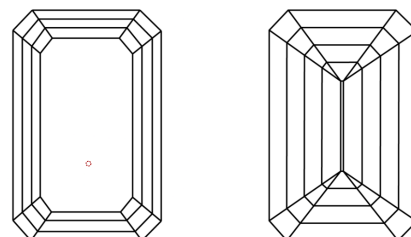


Sample Image Used

PROPORTIONS



CLARITY CHARACTERISTICS



KEY TO SYMBOLS

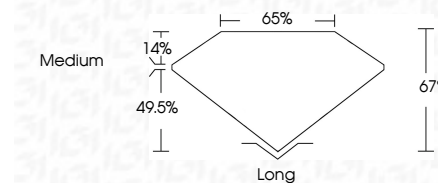
Red symbols indicate internal characteristics.
Green symbols indicate external characteristics.

COLOR

D E F G H I J Faint Very Light Light

CLARITY

IF	VS ¹⁻²	VS ¹⁻²	SI ¹⁻²	I ¹⁻³
Internally Flawless	Very Very Slightly Included	Very Slightly Included	Slightly Included	Included



ADDITIONAL GRADING INFORMATION

Polish **EXCELLENT**
Symmetry **EXCELLENT**
Fluorescence **NONE**
Inscription(s) **IGI LG727561269**
Comments: As Grown - No indication of post-growth treatment.
This Laboratory Grown Diamond was created by High Pressure High Temperature (HPHT) growth process.
Type II



IGI



August 13, 2025
IGI Report No LG727561269
EMERALD CUT
10.96 X 7.37 X 4.94 MM
4.05 CARATS
D
4.05 CARATS
D
VVS 1
67%
65%
Medium
Long
EXCELLENT
EXCELLENT
NONE
IGI LG727561269
Comments: As Grown - No indication of post-growth treatment.
This Laboratory Grown Diamond was created by High Pressure High Temperature (HPHT) growth process.
Type II