



LABORATORY GROWN DIAMOND REPORT

August 18, 2025
 IGI Report Number **LG727568720**
 Description **LABORATORY GROWN DIAMOND**
 Shape and Cutting Style **ROUND BRILLIANT**
 Measurements **3.62 - 3.64 X 2.24 MM**

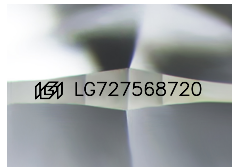
GRADING RESULTS

Carat Weight **0.18 CARAT**
 Color Grade **FANCY PINK**
 Clarity Grade **VVS 2**
 Cut Grade **GOOD**

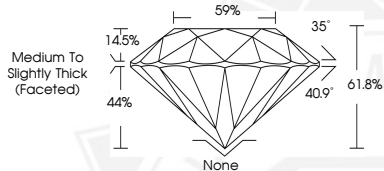
ADDITIONAL GRADING INFORMATION

Polish **VERY GOOD**
 Symmetry **FAIR**
 Fluorescence **SLIGHT**
 Inscription(s) **IGI LG727568720**

Comments: This Laboratory Grown Diamond was created by High Pressure High Temperature (HPHT) growth process. Indications of post-growth treatment.



Sample Image Used



August 18, 2025
 IGI Report Number **LG727568720**
 ROUND BRILLIANT
 LABORATORY GROWN DIAMOND
 3.62 - 3.64 X 2.24 MM
 Carat Weight **0.18 CARAT**
 Color Grade **FANCY PINK**
 Clarity Grade **VVS 2**
 Cut Grade **GOOD**
 Polish **VERY GOOD**
 Symmetry **FAIR**
 Fluorescence **SLIGHT**
 Inscription(s) **IGI LG727568720**

Comments: This Laboratory Grown Diamond was created by High Pressure High Temperature (HPHT) growth process. Indications of post-growth treatment.



August 18, 2025
 IGI Report Number **LG727568720**
 ROUND BRILLIANT
 LABORATORY GROWN DIAMOND
 3.62 - 3.64 X 2.24 MM
 Carat Weight **0.18 CARAT**
 Color Grade **FANCY PINK**
 Clarity Grade **VVS 2**
 Cut Grade **GOOD**
 Polish **VERY GOOD**
 Symmetry **FAIR**
 Fluorescence **SLIGHT**
 Inscription(s) **IGI LG727568720**

Comments: This Laboratory Grown Diamond was created by High Pressure High Temperature (HPHT) growth process. Indications of post-growth treatment.

THIS DOCUMENT WAS PRODUCED WITH THE FOLLOWING SECURITY MEASURES: SPECIAL DOCUMENT PAPER, INK SCREENS, WATERMARK, BACKGROUND DESIGNS, HOLOGRAM AND OTHER SECURITY FEATURES NOT LISTED AND DO EXCEED DOCUMENT SECURITY INDUSTRY GUIDELINES.