



ELECTRONIC COPY

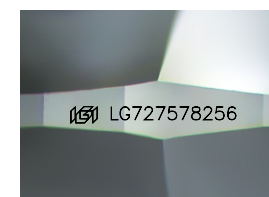
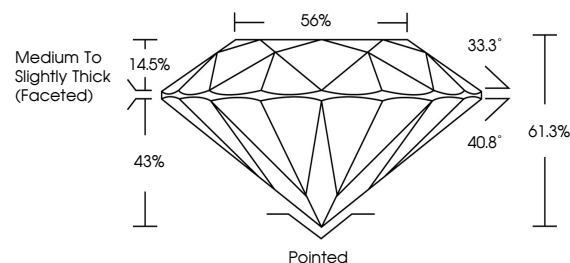
LG727578256
Report verification at igi.org



September 13, 2025
IGI Report Number LG727578256
Description LABORATORY GROWN DIAMOND
Shape and Cutting Style ROUND BRILLIANT
Measurements 9.08 - 9.14 X 5.59 MM
GRADING RESULTS
Carat Weight 2.84 CARATS
Color Grade E
Clarity Grade INTERNALLY FLAWLESS
Cut Grade IDEAL

September 13, 2025
IGI Report Number LG727578256
Description LABORATORY GROWN DIAMOND
Shape and Cutting Style ROUND BRILLIANT
Measurements 9.08 - 9.14 X 5.59 MM

PROPORTIONS

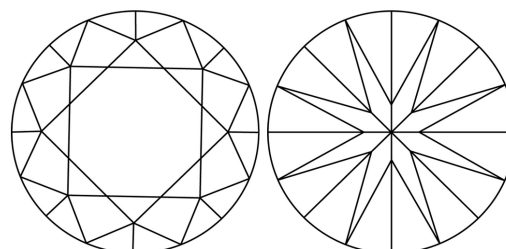


Sample Image Used

GRADING RESULTS

Carat Weight 2.84 CARATS
Color Grade E
Clarity Grade INTERNALLY FLAWLESS
Cut Grade IDEAL

CLARITY CHARACTERISTICS



KEY TO SYMBOLS

Red symbols indicate internal characteristics.
Green symbols indicate external characteristics.

COLOR

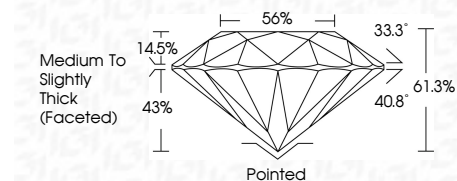
D E F G H I J Faint Very Light Light

CLARITY

IF VS 1-2 VS 1-2 SI 1-2 I 1-3
Internally Flawless Very Very Slightly Included Very Slightly Included Slightly Included Included

ADDITIONAL GRADING INFORMATION

Polish EXCELLENT
Symmetry EXCELLENT
Fluorescence NONE
Inscription(s) LG727578256
Comments: As Grown - No indication of post-growth treatment.
This Laboratory Grown Diamond was created by High Pressure High Temperature (HPHT) growth process.
Type II



IGI



September 13, 2025
IGI Report No LG727578256
ROUND BRILLIANT
9.08 - 9.14 X 5.59 MM
2.84 CARATS
E
IF
IDEAL
61.3%
56%
Medium To Slightly Thick (Faceted)
Pointed
EXCELLENT
EXCELLENT
NONE
NONE
IGI LG727578256
Comments: As Grown - No indication of post-growth treatment.
This Laboratory Grown Diamond was created by High Pressure High Temperature (HPHT) growth process.
Type II