



**ELECTRONIC COPY**

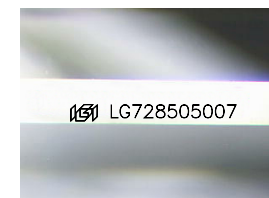
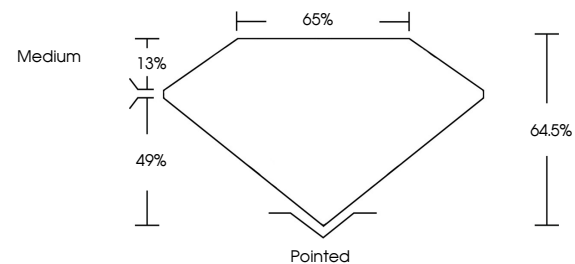
LG728505007  
Report verification at igi.org



August 14, 2025  
IGI Report Number **LG728505007**  
Description **LABORATORY GROWN DIAMOND**  
Shape and Cutting Style **CUT CORNERED  
RECTANGULAR MODIFIED  
BRILLIANT**  
Measurements **14.29 X 9.88 X 6.37 MM**  
**GRADING RESULTS**  
Carat Weight **7.52 CARATS**  
Color Grade **F**  
Clarity Grade **VS 1**

August 14, 2025  
IGI Report Number **LG728505007**  
Description **LABORATORY GROWN DIAMOND**  
Shape and Cutting Style **CUT CORNERED RECTANGULAR  
MODIFIED BRILLIANT**  
Measurements **14.29 X 9.88 X 6.37 MM**

**PROPORTIONS**

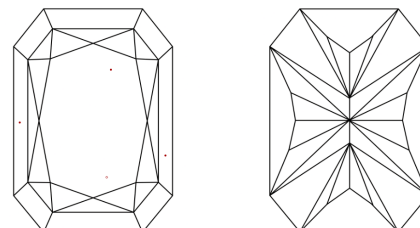


Sample Image Used

**GRADING RESULTS**

Carat Weight **7.52 CARATS**  
Color Grade **F**  
Clarity Grade **VS 1**

**CLARITY CHARACTERISTICS**



**KEY TO SYMBOLS**

Red symbols indicate internal characteristics.  
Green symbols indicate external characteristics.

**ADDITIONAL GRADING INFORMATION**

Polish **EXCELLENT**  
Symmetry **EXCELLENT**  
Fluorescence **NONE**  
Inscription(s) **IGI LG728505007**

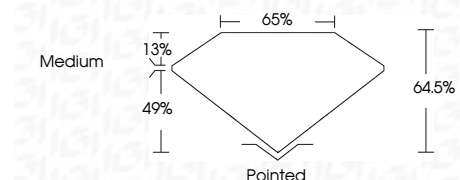
Comments: This Laboratory Grown Diamond was created by Chemical Vapor Deposition (CVD) growth process.  
Type IIa

**COLOR**

D E F G H I J Faint Very Light Light

**CLARITY**

IF	VS <sup>1-2</sup>	VS <sup>1-2</sup>	SI <sup>1-2</sup>	I <sup>1-3</sup>
Internally Flawless	Very Very Slightly Included	Very Slightly Included	Slightly Included	Included



**ADDITIONAL GRADING INFORMATION**

Polish **EXCELLENT**  
Symmetry **EXCELLENT**  
Fluorescence **NONE**  
Inscription(s) **IGI LG728505007**  
Comments: This Laboratory Grown Diamond was created by Chemical Vapor Deposition (CVD) growth process.  
Type IIa



**IGI**



August 14, 2025  
IGI Report No **LG728505007**  
**CUT CORNERED RECT. MODIFIED BRILLIANT**  
**14.29 X 9.88 X 6.37 MM**  
Carat Weight **7.52 CARATS**  
Color Grade **F**  
Clarity Grade **VS 1**  
Depth **64.6%**  
Table **65%**  
Girdle **Medium**  
Culet **Pointed**  
Polish **EXCELLENT**  
Symmetry **EXCELLENT**  
Fluorescence **NONE**  
Inscription(s) **IGI LG728505007**

Comments: This Laboratory Grown Diamond was created by Chemical Vapor Deposition (CVD) growth process.  
Type IIa