



**ELECTRONIC COPY**

LG728519169  
Report verification at igi.org

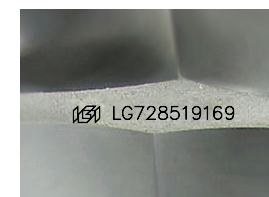
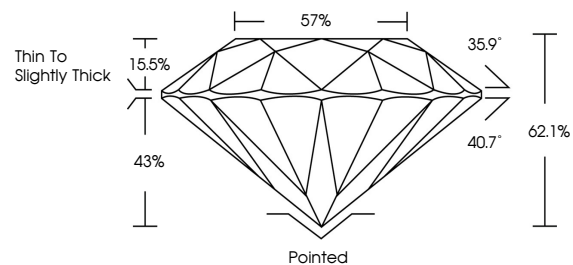


September 11, 2025  
IGI Report Number **LG728519169**  
Description **LABORATORY GROWN DIAMOND**  
Shape and Cutting Style **ROUND BRILLIANT**  
Measurements **8.34 - 8.38 X 5.20 MM**  
**GRADING RESULTS**  
Carat Weight **2.24 CARATS**  
Color Grade **D**  
Clarity Grade **VS 2**  
Cut Grade **EXCELLENT**

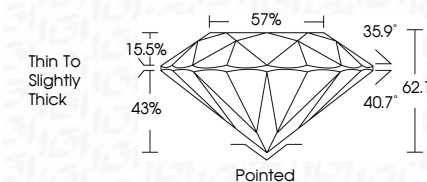
September 11, 2025  
IGI Report Number **LG728519169**  
Description **LABORATORY GROWN DIAMOND**  
Shape and Cutting Style **ROUND BRILLIANT**  
Measurements **8.34 - 8.38 X 5.20 MM**  
**GRADING RESULTS**  
Carat Weight **2.24 CARATS**  
Color Grade **D**  
Clarity Grade **VS 2**  
Cut Grade **EXCELLENT**

**ADDITIONAL GRADING INFORMATION**  
Polish **EXCELLENT**  
Symmetry **EXCELLENT**  
Fluorescence **NONE**  
Inscription(s) **IGI LG728519169**

**PROPORTIONS**



Sample Image Used



**COLOR**

D E F G H I J Faint Very Light Light

**CLARITY**

IF	VS <sup>1-2</sup>	VS <sup>1-2</sup>	SI <sup>1-2</sup>	I <sup>1-3</sup>
Internally Flawless	Very Very Slightly Included	Very Slightly Included	Slightly Included	Included

**ADDITIONAL GRADING INFORMATION**

Polish **EXCELLENT**  
Symmetry **EXCELLENT**  
Fluorescence **NONE**  
Inscription(s) **IGI LG728519169**



**IGI**



September 11, 2025	2.24 CARATS	D	VS 2	62.1%	57%	Pointed
IGI Report No LG728519169	EXCELLENT	EXCELLENT	EXCELLENT	EXCELLENT	EXCELLENT	EXCELLENT
ROUND BRILLIANT	8.34 - 8.38 X 5.20 MM	None	None	None	None	None
Carat Weight	Color Grade	Clarity Grade	Depth	Table	Grille	Thin To Slightly Thick
Polish	Symmetry	Fluorescence	Inscription(s)	IGI LG728519169		