



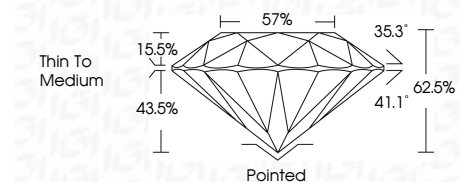
**ELECTRONIC COPY**

LG728519878  
Report verification at igi.org



September 11, 2025  
IGI Report Number **LG728519878**  
Description **LABORATORY GROWN DIAMOND**  
Shape and Cutting Style **ROUND BRILLIANT**  
Measurements **8.06 - 8.08 X 5.05 MM**

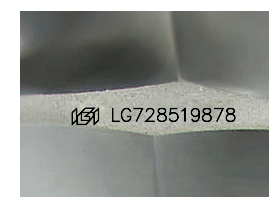
**GRADING RESULTS**  
Carat Weight **2.02 CARATS**  
Color Grade **F**  
Clarity Grade **VS 2**  
Cut Grade **IDEAL**



**ADDITIONAL GRADING INFORMATION**  
Polish **EXCELLENT**  
Symmetry **EXCELLENT**  
Fluorescence **NONE**  
Inscription(s) **IGI LG728519878**

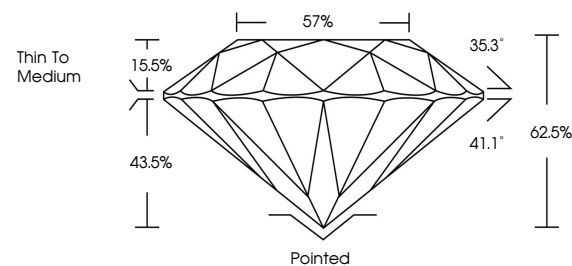


September 11, 2025	IGI Report No LG728519878	2.02 CARATS	F	VS 2	IDEAL	62.5%	57%	Thin To Medium	Pointed	EXCELLENT	EXCELLENT	NONE	IGI LG728519878
IGI Report No LG728519878	ROUND BRILLIANT	8.06 - 8.08 X 5.05 MM	Color Grade	Clarity Grade	Cut Grade	Depth	Table	Girdle	Culet	Polish	Symmetry	Fluorescence	Inscription(s)



Sample Image Used

**PROPORTIONS**



**COLOR**

D E F G H I J Faint Very Light Light

**CLARITY**

IF	VS <sup>1-2</sup>	VS <sup>1-2</sup>	SI <sup>1-2</sup>	I <sup>1-3</sup>
Internally Flawless	Very Very Slightly Included	Very Slightly Included	Slightly Included	Included

