



**ELECTRONIC COPY**

LG728520188  
Report verification at igi.org



September 19, 2025

IGI Report Number **LG728520188**

Description **LABORATORY GROWN DIAMOND**

Shape and Cutting Style **ROUND BRILLIANT**

Measurements **6.98 - 7.00 X 4.35 MM**

**GRADING RESULTS**

Carat Weight **1.30 CARAT**

Color Grade **D**

Clarity Grade **VS 2**

Cut Grade **IDEAL**

September 19, 2025

IGI Report Number **LG728520188**

Description **LABORATORY GROWN DIAMOND**

Shape and Cutting Style **ROUND BRILLIANT**

Measurements **6.98 - 7.00 X 4.35 MM**

**GRADING RESULTS**

Carat Weight **1.30 CARAT**

Color Grade **D**

Clarity Grade **VS 2**

Cut Grade **IDEAL**

**ADDITIONAL GRADING INFORMATION**

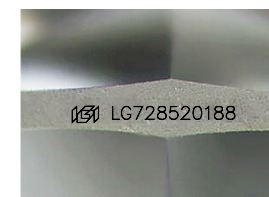
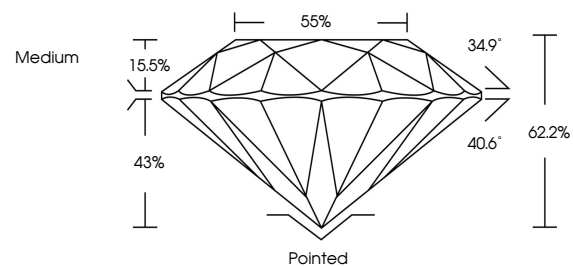
Polish **EXCELLENT**

Symmetry **EXCELLENT**

Fluorescence **NONE**

Inscription(s) **IGI LG728520188**

**PROPORTIONS**



Sample Image Used

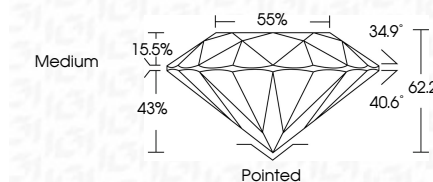
**COLOR**

D E F G H I J Faint Very Light Light

**CLARITY**

IF WS<sup>1-2</sup> VS<sup>1-2</sup> SI<sup>1-2</sup> I<sup>1-3</sup>

Internally Flawless Very Very Slightly Included Very Slightly Included Slightly Included Included



**ADDITIONAL GRADING INFORMATION**

Polish **EXCELLENT**

Symmetry **EXCELLENT**

Fluorescence **NONE**

Inscription(s) **IGI LG728520188**



**IGI**



September 19, 2025	1.30 CARAT	D	VS 2	IDEAL	62.2%	85%	Medium	Pointed	EXCELLENT	EXCELLENT	NONE	IGI LG728520188
IGI Report No LG728520188	Carat Weight	Color Grade	Clarity Grade	Cut Grade	Depth	Table	Girdle	Culet	Polish	Symmetry	Fluorescence	Inscription(s)
ROUND BRILLIANT	6.98 - 7.00 X 4.35 MM	D	VS 2	IDEAL	62.2%	85%	Medium	Pointed	EXCELLENT	EXCELLENT	NONE	IGI LG728520188