



**ELECTRONIC COPY**

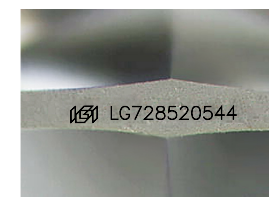
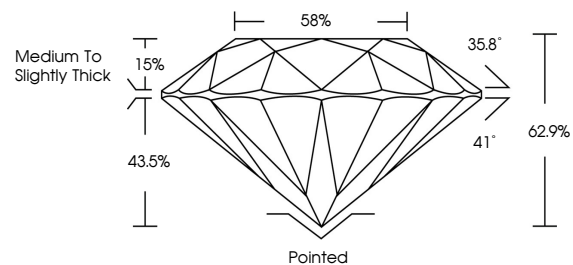
LG728520544  
Report verification at igi.org



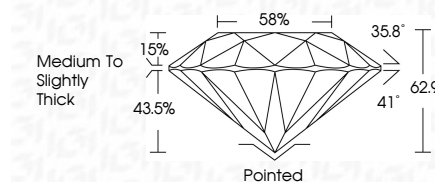
September 19, 2025  
IGI Report Number **LG728520544**  
Description **LABORATORY GROWN DIAMOND**  
Shape and Cutting Style **ROUND BRILLIANT**  
Measurements **6.12 - 6.14 X 3.86 MM**  
**GRADING RESULTS**  
Carat Weight **0.91 CARAT**  
Color Grade **D**  
Clarity Grade **VS 1**  
Cut Grade **EXCELLENT**

September 19, 2025  
IGI Report Number **LG728520544**  
Description **LABORATORY GROWN DIAMOND**  
Shape and Cutting Style **ROUND BRILLIANT**  
Measurements **6.12 - 6.14 X 3.86 MM**  
**GRADING RESULTS**  
Carat Weight **0.91 CARAT**  
Color Grade **D**  
Clarity Grade **VS 1**  
Cut Grade **EXCELLENT**

**PROPORTIONS**



Sample Image Used



**ADDITIONAL GRADING INFORMATION**  
Polish **EXCELLENT**  
Symmetry **EXCELLENT**  
Fluorescence **NONE**  
Inscription(s) **IGI LG728520544**

**COLOR**

D E F G H I J Faint Very Light Light

**CLARITY**

IF	VS <sup>1-2</sup>	VS <sup>1-2</sup>	SI <sup>1-2</sup>	I <sup>1-3</sup>
Internally Flawless	Very Very Slightly Included	Very Slightly Included	Slightly Included	Included

**ADDITIONAL GRADING INFORMATION**

Polish **EXCELLENT**  
Symmetry **EXCELLENT**  
Fluorescence **NONE**  
Inscription(s) **IGI LG728520544**



**IGI**



September 19, 2025  
IGI Report No LG728520544  
**ROUND BRILLIANT**  
0.91 CARAT  
Color Grade **D**  
Clarity Grade **VS 1**  
Depth **62.9%**  
Table **15%**  
Girdle **Medium To Slightly Thick**  
Culet **Pointed**  
Polish **EXCELLENT**  
Symmetry **EXCELLENT**  
Fluorescence **NONE**  
Inscriptions(s) **IGI LG728520544**