



ELECTRONIC COPY

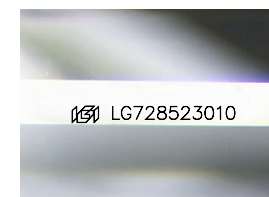
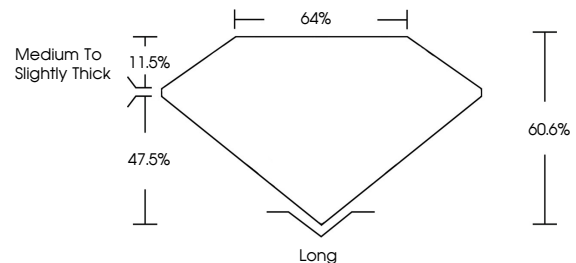
LABORATORY GROWN DIAMOND REPORT

October 8, 2025
 IGI Report Number **LG728523010**
 Description **LABORATORY GROWN DIAMOND**
 Shape and Cutting Style **EMERALD CUT**
 Measurements **13.02 X 8.42 X 5.11 MM**
GRADING RESULTS
 Carat Weight **5.84 CARATS**
 Color Grade **E**
 Clarity Grade **VVS 2**
 Cut Grade **EXCELLENT**

ADDITIONAL GRADING INFORMATION

Polish **EXCELLENT**
 Symmetry **EXCELLENT**
 Fluorescence **NONE**
 Inscription(s) **IGI LG728523010**

PROPORTIONS



Sample Image Used

COLOR

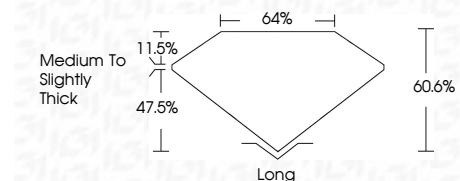
D E F G H I J Faint Very Light Light

CLARITY

| FL | IF | VVS ¹⁻² | VS ¹⁻² | SI ¹⁻² | I ¹⁻³ |
|----------|---------------------|-----------------------------|------------------------|-------------------|------------------|
| Flawless | Internally Flawless | Very Very Slightly Included | Very Slightly Included | Slightly Included | Included |



October 8, 2025
 IGI Report Number **LG728523010**
 Description **LABORATORY GROWN DIAMOND**
 Shape and Cutting Style **EMERALD CUT**
 Measurements **13.02 X 8.42 X 5.11 MM**
GRADING RESULTS
 Carat Weight **5.84 CARATS**
 Color Grade **E**
 Clarity Grade **VVS 2**
 Cut Grade **EXCELLENT**



ADDITIONAL GRADING INFORMATION

Polish **EXCELLENT**
 Symmetry **EXCELLENT**
 Fluorescence **NONE**
 Inscription(s) **IGI LG728523010**



IGI



October 8, 2025
 IGI Report No **LG728523010**
EMERALD CUT

13.02 X 8.42 X 5.11 MM

5.84 CARATS
E
VVS 2
EXCELLENT
60.6%
64%
Medium To Slightly Thick

Long
EXCELLENT
EXCELLENT
NONE
IGI LG728523010