



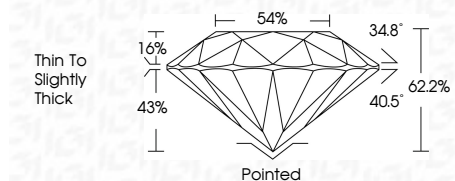
**ELECTRONIC COPY**

LG728523202  
Report verification at igi.org



October 8, 2025  
IGI Report Number **LG728523202**  
Description **LABORATORY GROWN DIAMOND**  
Shape and Cutting Style **ROUND BRILLIANT**  
Measurements **8.16 - 8.25 X 5.11 MM**

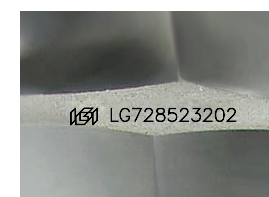
**GRADING RESULTS**  
Carat Weight **2.11 CARATS**  
Color Grade **D**  
Clarity Grade **VS 1**  
Cut Grade **IDEAL**



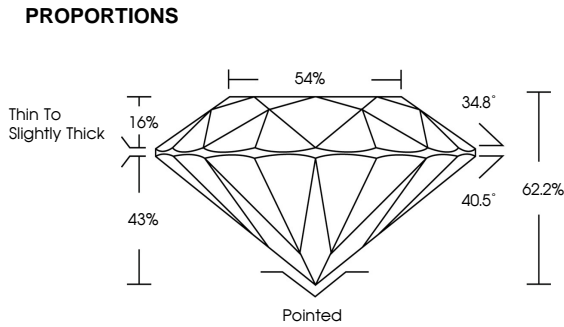
**ADDITIONAL GRADING INFORMATION**  
Polish **EXCELLENT**  
Symmetry **EXCELLENT**  
Fluorescence **NONE**  
Inscription(s) **(IGI) LG728523202**



October 8, 2025	IGI Report No LG728523202	2.11 CARATS	D	VS 1	IDEAL	62.2%	34.8°	40.5°	Pointed	EXCELLENT	EXCELLENT	NONE	(IGI) LG728523202
IGI Report No LG728523202	ROUND BRILLIANT	8.16 - 8.25 X 5.11 MM	Color Grade	Clarity Grade	Cut Grade	Table	Depth	Girdle	Thin To Slightly Thick	Polish	Symmetry	Fluorescence	Inscription(s)



Sample Image Used



**COLOR**

D	E	F	G	H	I	J	Faint	Very Light	Light
---	---	---	---	---	---	---	-------	------------	-------

**CLARITY**

FL	IF	VS <sup>1-2</sup>	VS <sup>1-2</sup>	SI <sup>1-2</sup>	I <sup>1-3</sup>
Flawless	Internally Flawless	Very Very Slightly Included	Very Slightly Included	Slightly Included	Included

