



ELECTRONIC COPY

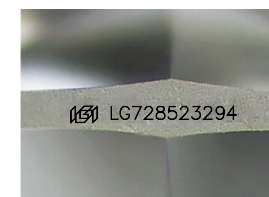
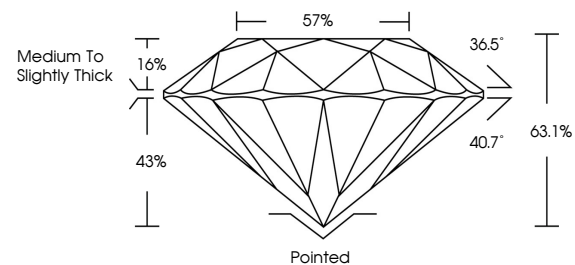
LG728523294
Report verification at igi.org



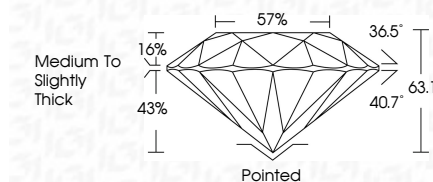
October 8, 2025
IGI Report Number **LG728523294**
Description **LABORATORY GROWN DIAMOND**
Shape and Cutting Style **ROUND BRILLIANT**
Measurements **8.15 - 8.16 X 5.15 MM**
GRADING RESULTS
Carat Weight **2.15 CARATS**
Color Grade **E**
Clarity Grade **VVS 1**
Cut Grade **EXCELLENT**

October 8, 2025
IGI Report Number **LG728523294**
Description **LABORATORY GROWN DIAMOND**
Shape and Cutting Style **ROUND BRILLIANT**
Measurements **8.15 - 8.16 X 5.15 MM**
GRADING RESULTS
Carat Weight **2.15 CARATS**
Color Grade **E**
Clarity Grade **VVS 1**
Cut Grade **EXCELLENT**

PROPORTIONS



Sample Image Used



ADDITIONAL GRADING INFORMATION
Polish **EXCELLENT**
Symmetry **EXCELLENT**
Fluorescence **NONE**
Inscription(s) **IGI LG728523294**

COLOR

D E F G H I J Faint Very Light Light

CLARITY

FL	IF	VVS ¹⁻²	VS ¹⁻²	SI ¹⁻²	I ¹⁻³
Flawless	Internally Flawless	Very Very Slightly Included	Very Slightly Included	Slightly Included	Included

ADDITIONAL GRADING INFORMATION

Polish **EXCELLENT**
Symmetry **EXCELLENT**
Fluorescence **NONE**
Inscription(s) **IGI LG728523294**



IGI



October 8, 2025
IGI Report No **LG728523294**
ROUND BRILLIANT
8.15 - 8.16 X 5.15 MM
Carat Weight **2.15 CARATS**
Color Grade **E**
Clarity Grade **VVS 1**
Depth **EXCELLENT**
Table **63.1%**
Girdle **57%**
Medium To Slightly Thick
Culet **Pointed**
Polish **EXCELLENT**
Symmetry **EXCELLENT**
Fluorescence **NONE**
Inscriptions(s) **IGI LG728523294**