



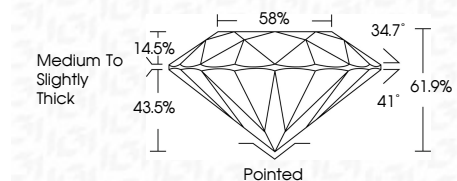
ELECTRONIC COPY

LG728523678
Report verification at igi.org



October 8, 2025
IGI Report Number **LG728523678**
Description **LABORATORY GROWN DIAMOND**
Shape and Cutting Style **ROUND BRILLIANT**
Measurements **6.89 - 6.90 X 4.27 MM**

GRADING RESULTS
Carat Weight **1.25 CARAT**
Color Grade **D**
Clarity Grade **VVS 2**
Cut Grade **IDEAL**



ADDITIONAL GRADING INFORMATION
Polish **EXCELLENT**
Symmetry **EXCELLENT**
Fluorescence **NONE**
Inscription(s) **(IGI) LG728523678**

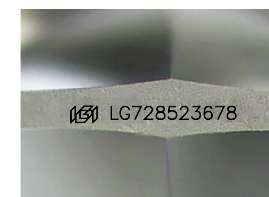
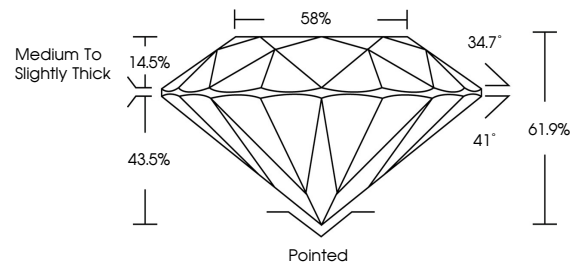


October 8, 2025
IGI Report No **LG728523678**
ROUND BRILLIANT
6.89 - 6.90 X 4.27 MM
1.25 CARAT
D
VVS 2
IDEAL
61.9%
58%
Medium To Slightly Thick
Pointed
EXCELLENT
EXCELLENT
NONE
(IGI) LG728523678

October 8, 2025
IGI Report Number **LG728523678**
Description **LABORATORY GROWN DIAMOND**
Shape and Cutting Style **ROUND BRILLIANT**
Measurements **6.89 - 6.90 X 4.27 MM**
GRADING RESULTS
Carat Weight **1.25 CARAT**
Color Grade **D**
Clarity Grade **VVS 2**
Cut Grade **IDEAL**

ADDITIONAL GRADING INFORMATION
Polish **EXCELLENT**
Symmetry **EXCELLENT**
Fluorescence **NONE**
Inscription(s) **(IGI) LG728523678**

PROPORTIONS



Sample Image Used

COLOR

D E F G H I J Faint Very Light Light

CLARITY

FL	IF	VS ¹⁻²	VS ¹⁻²	SI ¹⁻²	I ¹⁻³
Flawless	Internally Flawless	Very Very Slightly Included	Very Slightly Included	Slightly Included	Included

