



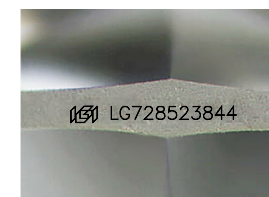
ELECTRONIC COPY

LG728523844
Report verification at igi.org



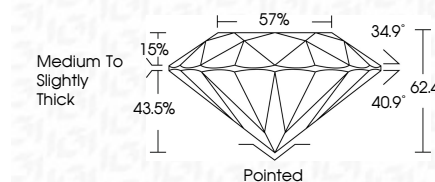
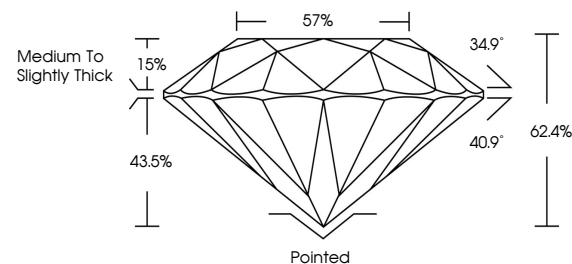
October 8, 2025
IGI Report Number **LG728523844**
Description **LABORATORY GROWN DIAMOND**
Shape and Cutting Style **ROUND BRILLIANT**
Measurements **6.38 - 6.39 X 3.99 MM**

GRADING RESULTS
Carat Weight **1.00 CARAT**
Color Grade **D**
Clarity Grade **VVS 2**
Cut Grade **IDEAL**



Sample Image Used

PROPORTIONS



ADDITIONAL GRADING INFORMATION
Polish **EXCELLENT**
Symmetry **EXCELLENT**
Fluorescence **NONE**
Inscription(s) **(IGI) LG728523844**

COLOR

D E F G H I J Faint Very Light Light

CLARITY

FL	IF	VS ¹⁻²	VS ¹⁻²	SI ¹⁻²	I ¹⁻³
Flawless	Internally Flawless	Very Very Slightly Included	Very Slightly Included	Slightly Included	Included



IGI



October 8, 2025
IGI Report No LG728523844
ROUND BRILLIANT
6.38 - 6.39 X 3.99 MM
1.00 CARAT
D
VVS 2
IDEAL
62.4%
57%
Medium To Slightly Thick
Pointed
EXCELLENT
EXCELLENT
NONE
IGI LG728523844

October 8, 2025
IGI Report No LG728523844
ROUND BRILLIANT
6.38 - 6.39 X 3.99 MM
1.00 CARAT
D
VVS 2
IDEAL
62.4%
57%
Medium To Slightly Thick
Pointed
EXCELLENT
EXCELLENT
NONE
IGI LG728523844