



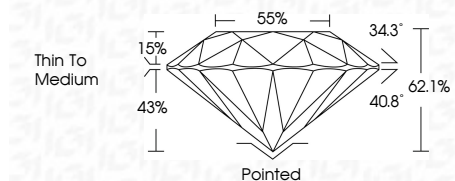
**ELECTRONIC COPY**

LG728523941  
Report verification at [igi.org](http://igi.org)



October 8, 2025  
IGI Report Number **LG728523941**  
Description **LABORATORY GROWN DIAMOND**  
Shape and Cutting Style **ROUND BRILLIANT**  
Measurements **6.92 - 6.94 X 4.31 MM**

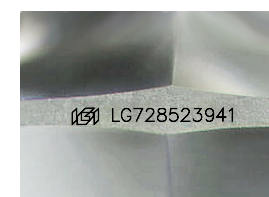
**GRADING RESULTS**  
Carat Weight **1.27 CARAT**  
Color Grade **D**  
Clarity Grade **VS 2**  
Cut Grade **IDEAL**



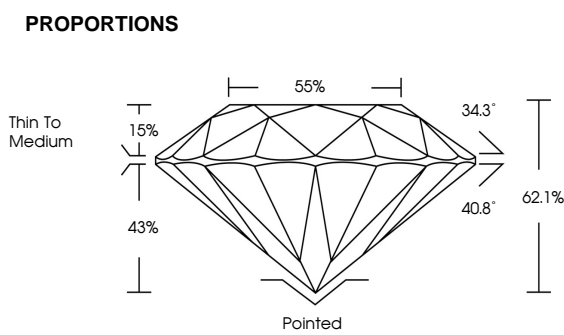
**ADDITIONAL GRADING INFORMATION**  
Polish **EXCELLENT**  
Symmetry **EXCELLENT**  
Fluorescence **NONE**  
Inscription(s) **IGI LG728523941**



October 8, 2025	IGI Report No LG728523941	1.27 CARAT	D	VS 2	IDEAL	62.1%	85%	Pointed	EXCELLENT	EXCELLENT	NONE	IGI LG728523941
ROUND BRILLIANT	6.92 - 6.94 X 4.31 MM	Color Grade	Clarity Grade	Depth	Table	Girdle	Thin To Medium	Culet	Polish	Symmetry	Fluorescence	Inscription(s)



Sample Image Used



**COLOR**

D	E	F	G	H	I	J	Faint	Very Light	Light
---	---	---	---	---	---	---	-------	------------	-------

**CLARITY**

FL	IF	VS <sup>1-2</sup>	VS <sup>1-2</sup>	SI <sup>1-2</sup>	I <sup>1-3</sup>
Flawless	Internally Flawless	Very Very Slightly Included	Very Slightly Included	Slightly Included	Included

