



**ELECTRONIC COPY**

LG728529853  
Report verification at igi.org



August 21, 2025  
IGI Report Number **LG728529853**  
Description **LABORATORY GROWN DIAMOND**  
Shape and Cutting Style **EMERALD CUT**  
Measurements **8.44 X 5.86 X 4.02 MM**  
**GRADING RESULTS**  
Carat Weight **2.07 CARATS**  
Color Grade **E**  
Clarity Grade **INTERNALLY FLAWLESS**

**LABORATORY GROWN DIAMOND REPORT**

August 21, 2025  
IGI Report Number **LG728529853**  
Description **LABORATORY GROWN DIAMOND**  
Shape and Cutting Style **EMERALD CUT**  
Measurements **8.44 X 5.86 X 4.02 MM**

**GRADING RESULTS**

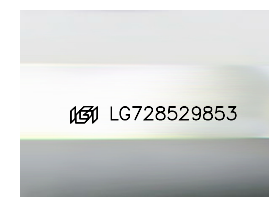
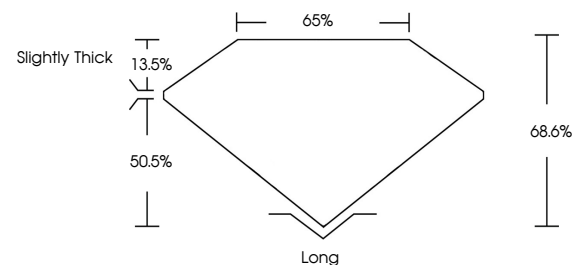
Carat Weight **2.07 CARATS**  
Color Grade **E**  
Clarity Grade **INTERNALLY FLAWLESS**

**ADDITIONAL GRADING INFORMATION**

Polish **EXCELLENT**  
Symmetry **EXCELLENT**  
Fluorescence **NONE**  
Inscription(s) **LG728529853**

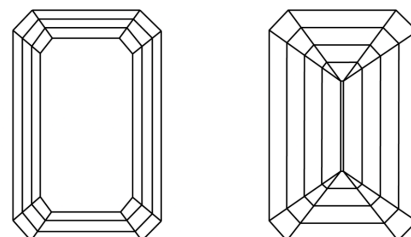
Comments: This Laboratory Grown Diamond was created by Chemical Vapor Deposition (CVD) growth process.  
Type IIa

**PROPORTIONS**



Sample Image Used

**CLARITY CHARACTERISTICS**



**KEY TO SYMBOLS**

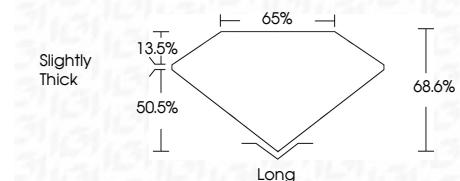
Red symbols indicate internal characteristics.  
Green symbols indicate external characteristics.

**COLOR**

D E F G H I J Faint Very Light Light

**CLARITY**

IF	VS <sup>1-2</sup>	VVS <sup>1-2</sup>	SI <sup>1-2</sup>	I <sup>1-3</sup>
Internally Flawless	Very Very Slightly Included	Very Slightly Included	Slightly Included	Included



**ADDITIONAL GRADING INFORMATION**

Polish **EXCELLENT**  
Symmetry **EXCELLENT**  
Fluorescence **NONE**  
Inscription(s) **LG728529853**  
Comments: This Laboratory Grown Diamond was created by Chemical Vapor Deposition (CVD) growth process.  
Type IIa



August 21, 2025  
IGI Report No **LG728529853**  
**EMERALD CUT**  
**8.44 X 5.86 X 4.02 MM**  
Carat Weight **2.07 CARATS**  
Color Grade **E**  
Clarity Grade **IF**  
Depth **68.6%**  
Table **65%**  
Girdle **Slightly Thick**  
Culet **Long**  
Polish **EXCELLENT**  
Symmetry **EXCELLENT**  
Fluorescence **NONE**  
Inscription(s) **LG728529853**  
Comments: This Laboratory Grown Diamond was created by Chemical Vapor Deposition (CVD) growth process.  
Type IIa